

# Product Information

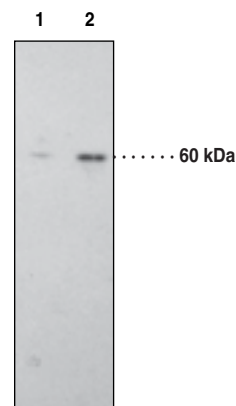


## CB<sub>1</sub> Receptor Polyclonal Antibody

Item No. 101500 • Lot. No. XXXXX

<b>Synonym:</b>	Cannabinoid Receptor 1
<b>Contents:</b>	This vial contains (100-500 µg of peptide affinity-purified IgG, <i>lot specific</i> ) in 500 µl TBS, pH <i>lot specific</i> , containing 50% glycerol and 0.02% sodium azide.
<b>Host:</b>	Rabbit
<b>Antigen:</b>	The CB <sub>1</sub> receptor polyclonal antibody was raised against a peptide corresponding to amino acids 1-14 from the human, rat, and mouse CB <sub>1</sub> receptor (MKSILDGLADTTFR) conjugated to KLH. <sup>1,2</sup>
<b>Stability:</b>	≥1 year at -20°C
<b>Application:</b>	This polyclonal antibody can be used for detection of the CB <sub>1</sub> receptor by western blot analysis at a dilution of 1: <i>lot specific</i> -1: <i>lot specific</i> . Does not work for IHC-frozen-tissue-sections. Other applications not tested. Immunofluorescence and flow cytometry have not yet been attempted using this antibody.
<b>Concentration:</b>	Varies by lot, from 0.2-1.0 mg/ml (100-500 µg/vial). Always 100 µl final working volume for western blotting.

The CB<sub>1</sub> receptor is a G-protein coupled receptor that binds the active component of cannabis, Δ<sup>9</sup>-tetrahydrocannabinol. This antisera has been raised against the N-terminal (amino acids 1-14) extracellular region of the CB<sub>1</sub> receptor and can be used for western blotting.<sup>1,2</sup> Human and rat CB<sub>1</sub> receptors exhibit 97.3% homology at the amino acid level over the complete protein, and 100% homology within the peptide sequence used to make this antibody.<sup>3,4</sup> This peptide exhibits no homology with the CB<sub>2</sub> receptor. Based on the amino acid sequence, the CB<sub>1</sub> receptor has a molecular weight of approximately 52,800.<sup>4</sup> The CB<sub>1</sub> receptor and the splice variant CB<sub>1a</sub> are localized mainly in the brain, whereas the CB<sub>2</sub> receptor is localized predominantly in peripheral tissues, including the spleen and hemopoietic cells.<sup>3-6</sup>



Lane 1: Rat brain homogenate (50 µg)  
Lane 2: Rat brain homogenate (100 µg)

### References

1. Howlett, A.C., Song, C., Berglund, B.A., *et al.* Characterization of CB<sub>1</sub> cannabinoid receptors using receptor peptide fragments and site-directed antibodies. *Mol. Pharmacol.* **53**, 504-510 (1998).
2. McIntosh, H.H., Song, C., and Howlett, A.C. CB<sub>1</sub> cannabinoid receptor: Cellular regulation and distribution in N18TG2 neuroblastoma cells. *Mol. Brain Res.* **53**, 163-173 (1998).
3. Gérard, C.M., Mollereau, C., Vassart, G., *et al.* Molecular cloning of a human cannabinoid receptor which is also expressed in testis. *Biochem. J.* **279**, 129-134 (1991).
4. Matsuda, L.A., Lolait, S.J., Brownstein, M.J., *et al.* Structure of a cannabinoid receptor and functional expression of the cloned cDNA. *Nature* **346**, 561-564 (1990).
5. Shire, D., Carillon, C., Kaghad, M., *et al.* An amino-terminal variant of the central cannabinoid receptor resulting from alternative splicing. *J. Biol. Chem.* **270**, 3726-3731 (1995).
6. Munro, S., Thomas, K.L., and Abu-Shaar, M. Molecular characterization of a peripheral receptor for cannabinoids. *Nature* **365**, 61-65 (1993).

### Related Products

For a list of related products please visit: [www.caymanchem.com/catalog/101500](http://www.caymanchem.com/catalog/101500)

**WARNING: THIS PRODUCT IS FOR LABORATORY RESEARCH ONLY. NOT FOR ADMINISTRATION TO HUMANS. NOT FOR HUMAN OR VETERINARY DIAGNOSTIC OR THERAPEUTIC USE.**

#### MATERIAL SAFETY DATA

This material should be considered hazardous until information to the contrary becomes available. Do not ingest, swallow, or inhale. Do not get in eyes, on skin, or on clothing. Wash thoroughly after handling. This information contains some, but not all, of the information required for the safe and proper use of this material. Before use, the user must review the complete Material Safety Data Sheet, which has been sent *via* email to your institution.

#### WARRANTY AND LIMITATION OF REMEDY

Cayman Chemical Company makes **no warranty or guarantee** of any kind, whether written or oral, expressed or implied, including without limitation, any warranty of fitness for a particular purpose, suitability and merchantability, which extends beyond the description of the chemicals hereof. Cayman **warrants only** to the original customer that the material will meet our specifications at the time of delivery.

Cayman will carry out its delivery obligations with due care and skill. Thus, in no event will Cayman have **any obligation or liability**, whether in tort (including negligence) or in contract, for any direct, indirect, incidental or consequential damages, even if Cayman is informed about their possible existence.

This limitation of liability does not apply in the case of intentional acts or negligence of Cayman, its directors or its employees.

Buyer's **exclusive remedy** and Cayman's sole liability hereunder shall be limited to a **refund** of the purchase price, or at Cayman's option, the **replacement**, at no cost to Buyer, of all material that does not meet our specifications.

Said refund or replacement is conditioned on Buyer giving written notice to Cayman within thirty (30) days after arrival of the material at its destination. Failure of Buyer to give said notice within thirty (30) days shall constitute a waiver by Buyer of all claims hereunder with respect to said material.

For further details, please refer to our **Warranty and Limitation of Remedy** located on our website and in our catalog.

Copyright Cayman Chemical Company, 02/03/2012

### Cayman Chemical

#### Mailing address

1180 E. Ellsworth Road  
Ann Arbor, MI  
48108 USA

#### Phone

(800) 364-9897  
(734) 971-3335

#### Fax

(734) 971-3640

#### E-Mail

[custserv@caymanchem.com](mailto:custserv@caymanchem.com)

#### Web

[www.caymanchem.com](http://www.caymanchem.com)