

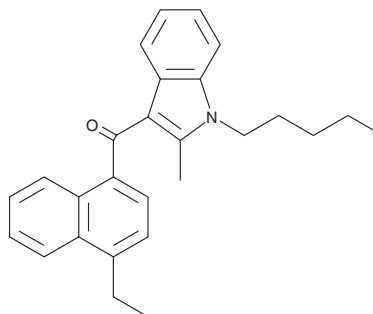
PRODUCT INFORMATION



JWH 213

Item No. 11659

CAS Registry No.: 824959-83-3
Formal Name: (4-ethyl-1-naphthalenyl)(2-methyl-1-pentyl-1H-indol-3-yl)-methanone
MF: C₂₇H₂₉NO
FW: 383.5
Purity: ≥98%
UV/Vis.: λ_{max}: 220, 319 nm
Supplied as: A solution in methanol
Storage: -20°C
Stability: ≥4 years



Information represents the product specifications. Batch specific analytical results are provided on each certificate of analysis.

Description

JWH 213 (Item No. 11659) is a naphthoylindole-class synthetic cannabinoid (CB) which strongly binds both the central CB₁ and peripheral CB₂ receptor (K_i = 1.5 and 0.42 nM, respectively).¹ The physiological and toxicological properties of this compound have not been evaluated. This product is intended for forensic and research applications.

Reference

1. Huffman, J.W., Zengin, G., Wu, M.J., *et al.* Structure-activity relationships for 1-alkyl-3-(1-naphthoyl) indoles at the cannabinoid CB₁ and CB₂ receptors: Steric and electronic effects of naphthoyl substituents. New highly selective CB₂ receptor agonists. *Bioorg. Med. Chem.* **13(1)**, 89-112 (2005).

WARNING

THIS PRODUCT IS FOR RESEARCH ONLY - NOT FOR HUMAN OR VETERINARY DIAGNOSTIC OR THERAPEUTIC USE.

SAFETY DATA

This material should be considered hazardous until further information becomes available. Do not ingest, inhale, get in eyes, on skin, or on clothing. Wash thoroughly after handling. Before use, the user must review the [complete](#) Safety Data Sheet, which has been sent via email to your institution.

WARRANTY AND LIMITATION OF REMEDY

Buyer agrees to purchase the material subject to Cayman's Terms and Conditions. Complete Terms and Conditions including Warranty and Limitation of Liability information can be found on our website.

Copyright Cayman Chemical Company, 07/18/2023

CAYMAN CHEMICAL

1180 EAST ELLSWORTH RD
ANN ARBOR, MI 48108 · USA

PHONE: [800] 364-9897
[734] 971-3335

FAX: [734] 971-3640

CUSTSERV@CAYMANCHEM.COM
WWW.CAYMANCHEM.COM