

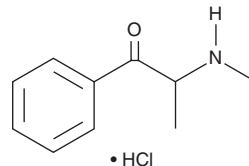
PRODUCT INFORMATION



Methcathinone (hydrochloride)

Item No. 11709

CAS Registry No.: 49656-78-2
Formal Name: 2-(methylamino)-1-phenyl-1-propanone, monohydrochloride
Synonym: DL-Ephedrone
MF: C₁₀H₁₃NO • HCl
FW: 199.7
Purity: ≥98%
UV/Vis.: λ_{max}: 249 nm
Supplied as: A crystalline solid
Storage: -20°C
Stability: ≥5 years



Information represents the product specifications. Batch specific analytical results are provided on each certificate of analysis.

Description

Methcathinone is a psychoactive cathinone. It is a β-ketone analog of methamphetamine and has comparable effects on monoamine uptake.¹ Methcathinone is regulated as a Schedule I controlled substance in the United States. This product is intended for forensic and research applications only.

Reference

1. Cozzi, N.V., Sievert, M.K., Shulgin, A.T., *et al.* Inhibition of plasma membrane monoamine transporters by β-ketoamphetamines. *Eur. J. Pharmacol.* **381(1)**, 63-69 (1999).

WARNING

THIS PRODUCT IS FOR RESEARCH ONLY - NOT FOR HUMAN OR VETERINARY DIAGNOSTIC OR THERAPEUTIC USE.

SAFETY DATA

This material should be considered hazardous until further information becomes available. Do not ingest, inhale, get in eyes, on skin, or on clothing. Wash thoroughly after handling. Before use, the user must review the [complete](#) Safety Data Sheet, which has been sent via email to your institution.

WARRANTY AND LIMITATION OF REMEDY

Buyer agrees to purchase the material subject to Cayman's Terms and Conditions. Complete Terms and Conditions including Warranty and Limitation of Liability information can be found on our website.

Copyright Cayman Chemical Company, 07/18/2023

CAYMAN CHEMICAL

1180 EAST ELLSWORTH RD
ANN ARBOR, MI 48108 · USA

PHONE: [800] 364-9897
[734] 971-3335

FAX: [734] 971-3640

CUSTSERV@CAYMANCHEM.COM
WWW.CAYMANCHEM.COM