

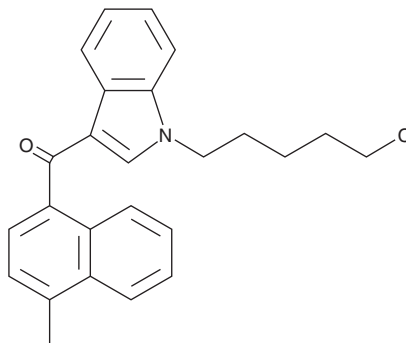
PRODUCT INFORMATION



MAM2201 N-(5-chloropentyl) analog

Item No. 13103

CAS Registry No.: 1445578-25-5
Formal Name: (1-(5-chloropentyl)-1H-indol-3-yl)
(4-methylnaphthalen-1-yl)methanone
Synonym: JWH 122 N-(5-chloropentyl) analog
MF: C₂₅H₂₄ClNO
FW: 389.9
Purity: ≥98%
UV/Vis.: λ_{max}: 222, 312 nm
Supplied as: A solution in acetonitrile
Storage: -20°C
Stability: ≥4 years



Information represents the product specifications. Batch specific analytical results are provided on each certificate of analysis.

Description

MAM2201 (Item No. 9001219) is a synthetic cannabinoid (CB) that is closely related, structurally, to AM2201 (Item No. 10707), a compound which displays high affinities for both CB receptors.¹ MAM2201 N-(5-chloropentyl) analog (Item No. 13103) differs from MAM2201 by having chlorine rather than fluorine on the terminal carbon of the alkyl group. The physiological properties of this compound have not been evaluated. This product is intended for forensic and research applications.

Reference

1. Makriyannis, A. and Deng, H. Cannabimimetic indole derivatives. *University of Connecticut*. **WO01/28557A1** (2001).

WARNING
THIS PRODUCT IS FOR RESEARCH ONLY - NOT FOR HUMAN OR VETERINARY DIAGNOSTIC OR THERAPEUTIC USE.

SAFETY DATA
This material should be considered hazardous until further information becomes available. Do not ingest, inhale, get in eyes, on skin, or on clothing. Wash thoroughly after handling. Before use, the user must review the [complete](#) Safety Data Sheet, which has been sent via email to your institution.

WARRANTY AND LIMITATION OF REMEDY
Buyer agrees to purchase the material subject to Cayman's Terms and Conditions. Complete Terms and Conditions including Warranty and Limitation of Liability information can be found on our website.

Copyright Cayman Chemical Company, 07/25/2023

CAYMAN CHEMICAL

1180 EAST ELLSWORTH RD
ANN ARBOR, MI 48108 · USA

PHONE: [800] 364-9897
[734] 971-3335

FAX: [734] 971-3640

CUSTSERV@CAYMANCHEM.COM
WWW.CAYMANCHEM.COM