

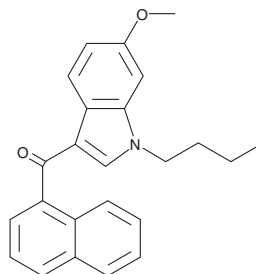
PRODUCT INFORMATION



JWH 073 6-methoxyindole analog

Item No. 14084

CAS Registry No.: 1869980-05-1
Formal Name: (1-butyl-6-methoxy-1H-indol-3-yl)-1-naphthalenyl-methanone
MF: C₂₄H₂₃NO₂
FW: 357.5
Purity: ≥98%
UV/Vis.: λ_{max}: 219, 292 nm
Supplied as: A crystalline solid
Storage: -20°C
Stability: ≥5 years



Information represents the product specifications. Batch specific analytical results are provided on each certificate of analysis.

Laboratory Procedures

JWH 073 6-methoxyindole analog is supplied as a crystalline solid. A stock solution may be made by dissolving the JWH 073 6-methoxyindole analog in the solvent of choice. JWH 073 6-methoxyindole analog is soluble in organic solvents such as ethanol, DMSO, and dimethyl formamide, which should be purged with an inert gas. The solubility of JWH 073 6-methoxyindole analog in these solvents is approximately 20 mg/ml.

Description

JWH 073 (Item No. 10904) is a potent synthetic cannabinoid (CB) which has been found in herbal mixtures.^{1,2} JWH 073 6-methoxyindole analog is an analog of JWH 073 and is also structurally similar to a primary metabolite of the CB, JWH 073 6-hydroxyindole metabolite (Item No. 9000863). The physiological and toxicological properties of this compound are not known. This product is intended for research and forensic applications.

References

1. Aung, M.M., Griffin, G., Huffman, J.W., *et al.* Influence of the N-1 alkyl chain length of cannabimimetic indoles upon CB₁ and CB₂ receptor binding. *Drug Alcohol Depend.* **60**, 133-140 (2000).
2. Kikura-Hanajiri, R., Uchiyama, N., and Goda, Y. Survey of current trends in the abuse of psychotropic substances and plants in Japan. *Leg. Med. (Tokyo)* **13(3)**, 109-15 (2011).

WARNING

THIS PRODUCT IS FOR RESEARCH ONLY - NOT FOR HUMAN OR VETERINARY DIAGNOSTIC OR THERAPEUTIC USE.

SAFETY DATA

This material should be considered hazardous until further information becomes available. Do not ingest, inhale, get in eyes, on skin, or on clothing. Wash thoroughly after handling. Before use, the user must review the [complete](#) Safety Data Sheet, which has been sent via email to your institution.

WARRANTY AND LIMITATION OF REMEDY

Buyer agrees to purchase the material subject to Cayman's Terms and Conditions. Complete Terms and Conditions including Warranty and Limitation of Liability information can be found on our website.

Copyright Cayman Chemical Company, 06/15/2023

CAYMAN CHEMICAL

1180 EAST ELLSWORTH RD
ANN ARBOR, MI 48108 · USA

PHONE: [800] 364-9897

[734] 971-3335

FAX: [734] 971-3640

CUSTSERV@CAYMANCHEM.COM
WWW.CAYMANCHEM.COM