

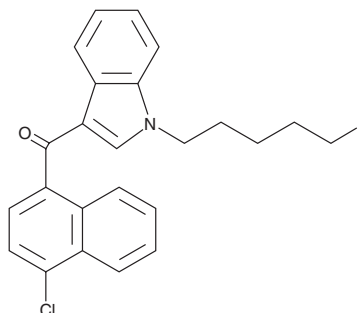
PRODUCT INFORMATION



CI2201

Item No. 15065

CAS Registry No.: 1391486-12-6
Formal Name: (4-chloro-1-naphthalenyl)[1-(5-fluoropentyl)-1H-indol-3-yl]-methanone
Synonym: JWH 398 N-(5-fluoropentyl) analog
MF: C₂₄H₂₁ClFNO
FW: 393.9
Purity: ≥95%
UV/Vis.: λ_{max}: 219, 314 nm
Supplied as: A solution in methanol
Storage: -20°C
Stability: ≥4 years



Information represents the product specifications. Batch specific analytical results are provided on each certificate of analysis.

Description

AM2201 (Item No. 10707) is a potent synthetic cannabinoid (CB) with K_i values of 1.0 and 2.6 nM for the central CB₁ and peripheral CB₂ receptors, respectively. It is a fluorinated derivative of JWH 018 (Item No. 10900). CI2201 is a derivative of AM2201 featuring a chlorine atom at the four position of the naphthalene group. The physiological and toxicological properties of this compound are not known. This product is intended for forensic and research applications.

WARNING

THIS PRODUCT IS FOR RESEARCH ONLY - NOT FOR HUMAN OR VETERINARY DIAGNOSTIC OR THERAPEUTIC USE.

SAFETY DATA

This material should be considered hazardous until further information becomes available. Do not ingest, inhale, get in eyes, on skin, or on clothing. Wash thoroughly after handling. Before use, the user must review the [complete](#) Safety Data Sheet, which has been sent via email to your institution.

WARRANTY AND LIMITATION OF REMEDY

Buyer agrees to purchase the material subject to Cayman's Terms and Conditions. Complete Terms and Conditions including Warranty and Limitation of Liability information can be found on our website.

Copyright Cayman Chemical Company, 06/26/2023

CAYMAN CHEMICAL

1180 EAST ELLSWORTH RD
ANN ARBOR, MI 48108 · USA

PHONE: [800] 364-9897
[734] 971-3335

FAX: [734] 971-3640

CUSTSERV@CAYMANCHEM.COM
WWW.CAYMANCHEM.COM