

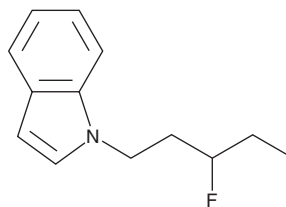
# PRODUCT INFORMATION



## 3-Fluoropentylindole

Item No. 15452

CAS Registry No.: 2386360-31-0  
Formal Name: 1-(3-fluoropentyl)-1H-indole  
MF:  $C_{13}H_{16}FN$   
FW: 205.3  
Purity:  $\geq 98\%$   
UV/Vis.:  $\lambda_{max}$ : 220, 282, 349 nm  
Supplied as: A solution in methanol  
Storage:  $-20^{\circ}C$   
Stability:  $\geq 1$  year



Information represents the product specifications. Batch specific analytical results are provided on each certificate of analysis.

### Description

A wide variety of aminoalkylindole analogs are potent synthetic cannabinoids (CBs), including many of the JWH compounds.<sup>1</sup> An alkyl chain of five carbons in length produces compounds with high affinity for both the central CB<sub>1</sub> and the peripheral CB<sub>2</sub> receptors.<sup>2</sup> The addition of a terminal fluorine to the pentyl chain can further increase affinity for both CB receptors.<sup>3</sup> 3-Fluoropentylindole is the base structure for various synthetic CBs that features a fluorine at the three position of the pentyl chain. A range of structures can be added to this base via a ketone linkage at the three position of the indole. The physiological and toxicological properties of this compound have not been evaluated. This product is intended for forensic and research applications.

### References

1. Wiley, J.L., Compton, D.R., Dai, D., *et al.* Structure-activity relationships of indole- and pyrrole-derived cannabinoids. *J. Pharmacol. Exp. Ther.* **285(3)**, 995-1004 (1998).
2. Aung, M.M., Griffin, G., Huffman, J.W., *et al.* Influence of the N-1 alkyl chain length of cannabimimetic indoles upon CB<sub>1</sub> and CB<sub>2</sub> receptor binding. *Drug Alcohol Depend.* **60(2)**, 133-140 (2000).
3. Makriyannis, A. and Deng, H. Cannabimimetic indole derivatives. *University of Connecticut.* **WO01/28557A1** (2001).

#### WARNING

THIS PRODUCT IS FOR RESEARCH ONLY - NOT FOR HUMAN OR VETERINARY DIAGNOSTIC OR THERAPEUTIC USE.

#### SAFETY DATA

This material should be considered hazardous until further information becomes available. Do not ingest, inhale, get in eyes, on skin, or on clothing. Wash thoroughly after handling. Before use, the user must review the complete Safety Data Sheet, which has been sent via email to your institution.

#### WARRANTY AND LIMITATION OF REMEDY

Buyer agrees to purchase the material subject to Cayman's Terms and Conditions. Complete Terms and Conditions including Warranty and Limitation of Liability information can be found on our website.

Copyright Cayman Chemical Company, 07/29/2022

#### CAYMAN CHEMICAL

1180 EAST ELLSWORTH RD  
ANN ARBOR, MI 48108 · USA

PHONE: [800] 364-9897  
[734] 971-3335

FAX: [734] 971-3640

CUSTSERV@CAYMANCHEM.COM  
WWW.CAYMANCHEM.COM