

PRODUCT INFORMATION

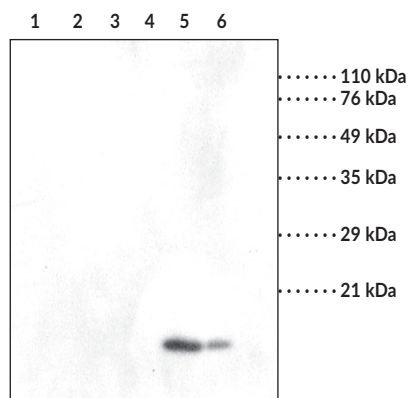


sPLA₂ (human Type V) Monoclonal Antibody (Clone MCL-3G1) Item No. 160510

Overview and Properties

Contents:	This vial contains 100 µg of protein A-purified antibody.
Synonyms:	gVPLA ₂ , Secretory Phospholipase A ₂ (human Group V)
Immunogen:	Recombinant human sPLA ₂ (Type V), W79A mutant ¹
Cross Reactivity:	(-) sPLA ₂ (Type IIa), cPLA ₂ , and iPLA ₂
Species Reactivity:	(+) Human; other species not tested
Uniprot No.:	P14555
Form:	Lyophilized
Storage:	-20°C (as supplied)
Stability:	≥3 years
Storage Buffer:	PBS, pH 7.2, when reconstituted in 100 µl distilled water
Clone:	MCL-3G1
Host:	Mouse
Isotype:	IgG ₁
Applications:	ELISA and Western blot (WB); the recommended starting dilution for ELISA and WB is 1:1,000. Other applications were not tested, therefore optimal working concentration/dilution should be determined empirically

Image



Lane 1: sPLA₂ (Type II) (1 µg)
Lane 2: A10 smooth muscle lysate (iPLA₂) (20 µg)
Lane 3: Bee venom sPLA₂ (1 µg)
Lane 4: Semi-pure cPLA₂ (5 µg)
Lane 5: sPLA₂ (Type V) (40 ng)
Lane 6: sPLA₂ (Type V) (8 ng)

WARNING
THIS PRODUCT IS FOR RESEARCH ONLY - NOT FOR HUMAN OR VETERINARY DIAGNOSTIC OR THERAPEUTIC USE.

SAFETY DATA
This material should be considered hazardous until further information becomes available. Do not ingest, inhale, get in eyes, on skin, or on clothing. Wash thoroughly after handling. Before use, the user must review the [complete](#) Safety Data Sheet, which has been sent via email to your institution.

WARRANTY AND LIMITATION OF REMEDY
Buyer agrees to purchase the material subject to Cayman's Terms and Conditions. Complete Terms and Conditions including Warranty and Limitation of Liability information can be found on our website.

Copyright Cayman Chemical Company, 11/16/2023

CAYMAN CHEMICAL
1180 EAST ELLSWORTH RD
ANN ARBOR, MI 48108 · USA
PHONE: [800] 364-9897
[734] 971-3335
FAX: [734] 971-3640
CUSTSERV@CAYMANCHEM.COM
WWW.CAYMANCHEM.COM

PRODUCT INFORMATION



Description

Phospholipase A₂ (PLA₂) catalyzes the hydrolysis of fatty acids at the *sn*-2 position of glycerophospholipids. PLA₂ (Type V) is a secretory PLA₂ (sPLA₂) of approximately 14 kDa and is one of the isoforms in the growing list of the PLA₂ enzyme family.¹ This enzyme, rather than the sPLA₂ (Type II), is responsible for arachidonic acid mobilization leading to prostaglandin production in macrophages and mast cells.²⁻⁵ Consistent with this role, sPLA₂ (Type V) is associated with the golgi apparatus, nuclear envelope, and plasma membrane in murine bone marrow-derived mast cells.⁶ sPLA₂ (Type V) has been cloned from a variety of species including human, mouse, and rat.⁷⁻⁹ The enzyme is expressed in heart, lung, placenta, and spleen, as well as P388D₁ macrophages and mast cells.^{2,3,9}

References

1. Balboa, M.A., Balsinde, J., Winstead, M.V., *et al.* Novel group V phospholipase A₂ involved in arachidonic acid mobilization in murine P388D₁ macrophages. *J. Biol. Chem.* **271**(50), 32381-32384 (1996).
2. Dennis, E.A. The growing phospholipase A₂ superfamily of signal transduction enzymes. *Trends Biochem. Sci.* **22**(1), 1-2 (1997).
3. Reddy, S.T., Winstead, M.V., Tischfield, J.A., *et al.* Analysis of the secretory phospholipase A₂ that mediates prostaglandin production in mast cells. *J. Biol. Chem.* **272**(21), 13591-13596 (1997).
4. Bingham, C.O., III, Murakami, M., Fujishima, H., *et al.* A heparin-sensitive phospholipase A₂ and prostaglandin endoperoxide synthase-2 are functionally linked in the delayed phase of prostaglandin D₂ generation in mouse bone marrow-derived mast cells. *J. Biol. Chem.* **271**(42), 25936-25944 (1996).
5. Muñoz, N.M., Kim, K.P., Han, S.K., *et al.* Characterization of monoclonal antibodies specific for 14-kDa human group V secretory phospholipase A₂ (hVPLA₂). *Hybridoma* **19**(2), 171-176 (2000).
6. Bingham, C.O., III, Fijneman, R.J.A., Friend, D.S., *et al.* Low molecular weight group IIA and group V phospholipase A₂ enzymes have different intracellular locations in mouse bone marrow-derived mast cells. *J. Biol. Chem.* **274**(44), 31476-31484 (1999).
7. Chen, J., Engle, S.J., Seilhamer, J.J., *et al.* Cloning and recombinant expression of a novel human low molecular weight Ca²⁺-dependent phospholipase A₂. *J. Biol. Chem.* **269**(4), 2365-2368 (1994).
8. Tischfield, J.A., Xia, Y.R., Shih, D.M., *et al.* Low-molecular-weight, calcium-dependent phospholipase A₂ genes are linked and map to homologous chromosome regions in mouse and human. *Genomics* **32**(3), 328-333 (1996).
9. Chen, J., Engle, S.J., Seilhamer, J.J., *et al.* Cloning, expression and partial characterization of a novel rat phospholipase A₂. *Biochim. Biophys. Acta* **1215**(1-2), 115-120 (1994).

CAYMAN CHEMICAL
1180 EAST ELLSWORTH RD
ANN ARBOR, MI 48108 · USA
PHONE: [800] 364-9897
[734] 971-3335
FAX: [734] 971-3640
CUSTSERV@CAYMANCHEM.COM
WWW.CAYMANCHEM.COM