

PRODUCT INFORMATION



LDE225 (phosphate)

Item No. 16263

CAS Registry No.: 1218778-77-8
Formal Name: *rel*-N-[6-[(2R,6S)-2,6-dimethyl-4-morpholinyl]-3-pyridinyl]-2-methyl-4'-(trifluoromethoxy)-[1,1'-biphenyl]-3-carboxamide, diphosphate

Synonyms: Erismodegib, NVP-LDE225, Sonidegib

MF: C₂₆H₂₆F₃N₃O₃ • 2H₃PO₄

FW: 681.5

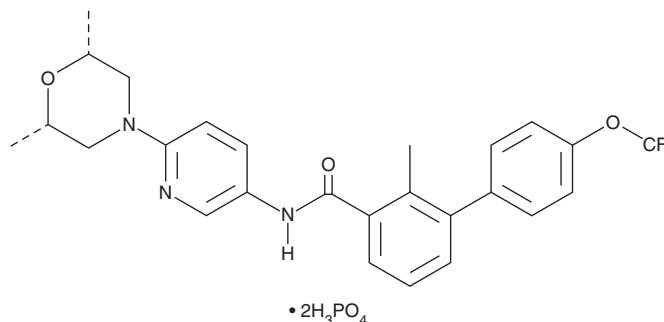
Purity: ≥98%

UV/Vis.: λ_{max}: 276 nm

Supplied as: A crystalline solid

Storage: -20°C

Stability: ≥4 years



Information represents the product specifications. Batch specific analytical results are provided on each certificate of analysis.

Laboratory Procedures

LDE225 (phosphate) is supplied as a crystalline solid. A stock solution may be made by dissolving the LDE225 (phosphate) in the solvent of choice, which should be purged with an inert gas. LDE225 (phosphate) is soluble in organic solvents such as ethanol, DMSO, and dimethyl formamide. The solubility of LDE225 (phosphate) in these solvents is approximately 10 mg/ml.

LDE225 (phosphate) is sparingly soluble in aqueous buffers. For maximum solubility in aqueous buffers, LDE225 (phosphate) should first be dissolved in ethanol and then diluted with the aqueous buffer of choice. LDE225 (phosphate) has a solubility of approximately 0.3 mg/ml in a 1:2 solution of ethanol:PBS (pH 7.2) using this method. We do not recommend storing the aqueous solution for more than one day.

Description

LDE225 is a smoothened (Smo) antagonist (IC₅₀s = 1.3 and 2.5 nM for mouse and human Smo, respectively).¹ *In vivo*, LDE225 (20 mg/kg per day) inhibits *Gli1* mRNA expression and prevents tumor growth in an orthotopic *Ptch*^{+/-} *p53*^{-/-} medulloblastoma mouse allograft model. Formulations containing LDE225 have been used in the treatment of locally advanced basal cell carcinomas.

Reference

1. Pan, S., Wu, X., Jiang, J., *et al.* Discovery of NVP-LDE225, a potent and selective smoothened antagonist. *ACS Med. Chem. Lett.* **1**(3), 130-134 (2010).

WARNING

THIS PRODUCT IS FOR RESEARCH ONLY - NOT FOR HUMAN OR VETERINARY DIAGNOSTIC OR THERAPEUTIC USE.

SAFETY DATA

This material should be considered hazardous until further information becomes available. Do not ingest, inhale, get in eyes, on skin, or on clothing. Wash thoroughly after handling. Before use, the user must review the complete Safety Data Sheet, which has been sent via email to your institution.

WARRANTY AND LIMITATION OF REMEDY

Buyer agrees to purchase the material subject to Cayman's Terms and Conditions. Complete Terms and Conditions including Warranty and Limitation of Liability information can be found on our website.

Copyright Cayman Chemical Company, 10/31/2022

CAYMAN CHEMICAL

1180 EAST ELLSWORTH RD

ANN ARBOR, MI 48108 · USA

PHONE: [800] 364-9897

[734] 971-3335

FAX: [734] 971-3640

CUSTSERV@CAYMANCHEM.COM

WWW.CAYMANCHEM.COM