

Prod. no. MT-11

Product Description

RABBIT ANTI-COD METALLOTHIONEIN

Polyclonal antibody, KH-1

biosense
LABORATORIES

www.biosense.no

Description

This product consists of rabbit polyclonal antibodies (purified IgG fraction) against metallothionein from Atlantic cod (*Gadus morhua*).

The solvent is 0.1 M Na-phosphate, 0.15 M NaCl, 1% BSA, 0.1% Na-azide, pH 7.4

Immunogen source

Metallothionein purified from liver of Atlantic cod (*Gadus morhua*)¹.

Application

The polyclonal antibody MT-11 works well in both ELISA and western blot for a number of species. Since assay conditions vary, the optimum dilution should be determined for each particular application.

Normal dilution range:

ELISA: 1:50 - 1:1000

Western blot: 1:50 - 1:1000

Storage

In the dark at 4°C.

Specificity

The polyclonal antibody MT-11 binds strongly to metallothionein in liver samples from Atlantic cod (*Gadus morhua*). The antibody cross-reacts with metallothionein from a wide variety of different species including whiting (*Merlangius merlangus*), yellow gurnard (*Trigla lucerna*) and flounder (*Platichthys flesus*) as well as *cypriniform*, *siluriform*, *salmoniform*, *perciform* and *rajiform* species². The degree of cross-reactivity differs between species and with the methods employed.

¹ Hylland *et al.* (1994), *Fish Physiol Biochem* 13, 81-91 ² Hylland *et al.* (1995), *Marine Environmental Research* 39, 111-115

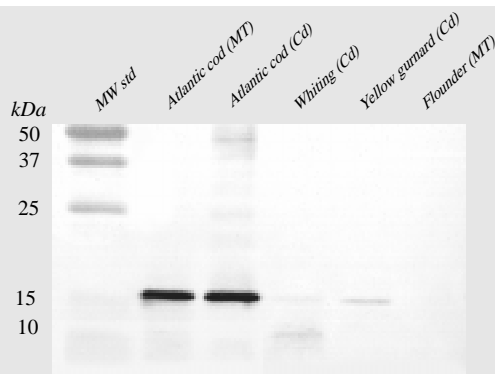
Western blot

Samples: Liver S9 fractions (2,5 µg protein per well) from fish induced with cadmium (Cd). Purified metallothionein (MT): 0,25 µg per well.

Primary antibody: MT-11, diluted 1:500

Secondary antibody: Peroxidase labelled Goat anti-rabbit IgG, diluted 1:3000

Development: Peroxidase color development reagent (4-chloro-1-naphthol/H₂O₂)



ELISA

Coating: Purified metallothionein (MT), 100 ng per well. Coating buffer used as negative control.

Primary antibody: MT-11

Secondary antibody: Peroxidase labelled Goat anti-rabbit IgG, diluted 1:3000

Development: Peroxidase substrate (OPD/H₂O₂)

