

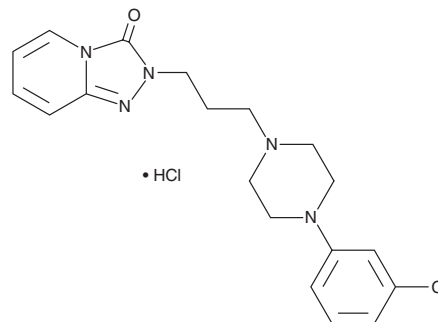
PRODUCT INFORMATION



Trazodone (hydrochloride)

Item No. 19048

CAS Registry No.: 25332-39-2
Formal Name: 2-[3-[4-(3-chlorophenyl)-1-piperazinyl]propyl]-1,2,4-triazolo[4,3-a]pyridin-3(2H)-one, monohydrochloride
MF: C₁₉H₂₂ClN₅O • HCl
FW: 408.3
Purity: ≥98%
Supplied as: A neat solid
Storage: -20°C
Stability: ≥4 years



Information represents the product specifications. Batch specific analytical results are provided on each certificate of analysis.

Description

Trazodone (hydrochloride) (Item No. 19048) is an analytical reference material categorized as a sedative.¹ It has less abuse potential in persons with a history of previous substance abuse than triazolam (Item No. 22577) or zolpidem (Item Nos. 15792 | 20648). This product is intended for research and forensic applications.

This product is qualified as a Reference Material that has been manufactured and tested to ISO/IEC 17025 and ISO 17034 international standards.

Reference

1. Rush, C.R., Baker, R.W., and Wright, K. Acute behavioral effects and abuse potential of trazodone, zolpidem and triazolam in humans. *Psychopharmacology (Berl)*. **144(3)**, 220-233 (1999).

WARNING

THIS PRODUCT IS FOR RESEARCH ONLY - NOT FOR HUMAN OR VETERINARY DIAGNOSTIC OR THERAPEUTIC USE.

SAFETY DATA

This material should be considered hazardous until further information becomes available. Do not ingest, inhale, get in eyes, on skin, or on clothing. Wash thoroughly after handling. Before use, the user must review the [complete](#) Safety Data Sheet, which has been sent via email to your institution.

WARRANTY AND LIMITATION OF REMEDY

Buyer agrees to purchase the material subject to Cayman's Terms and Conditions. Complete Terms and Conditions including Warranty and Limitation of Liability information can be found on our website.

Copyright Cayman Chemical Company, 08/26/2018

CAYMAN CHEMICAL

1180 EAST ELLSWORTH RD
ANN ARBOR, MI 48108 · USA

PHONE: [800] 364-9897

[734] 971-3335

FAX: [734] 971-3640

CUSTSERV@CAYMANCHEM.COM
WWW.CAYMANCHEM.COM