

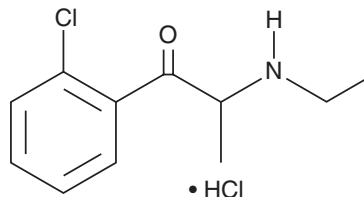
PRODUCT INFORMATION



2-Chloroethcathinone (hydrochloride)

Item No. 21260

CAS Registry No.: 879660-23-8
Formal Name: 1-(2-chlorophenyl)-2-(ethylamino)-1-propanone, monohydrochloride
Synonym: 2-CEC
MF: C₁₁H₁₄ClNO • HCl
FW: 248.2
Purity: ≥98%
UV/Vis.: λ_{max}: 211, 246, 290 nm
Supplied as: A crystalline solid
Storage: -20°C
Stability: ≥5 years



Information represents the product specifications. Batch specific analytical results are provided on each certificate of analysis.

Description

2-Chloroethcathinone (hydrochloride) (Item No. 21260) is an analytical reference standard that is structurally categorized as a cathinone. Although its metabolism, excretion, and biological availability have been reported, the physiological and toxicological properties of this compound are not known.¹ This product is intended for research and forensic applications.

Reference

1. Beckett, A.H. and Hossie, R.D. Metabolism, excretion and biological availability of 4'-chloro-2-ethylaminopropiophenone. *J. Pharm. Pharmacol.* **21:Suppl**, 157-161 (1969).

WARNING

THIS PRODUCT IS FOR RESEARCH ONLY - NOT FOR HUMAN OR VETERINARY DIAGNOSTIC OR THERAPEUTIC USE.

SAFETY DATA

This material should be considered hazardous until further information becomes available. Do not ingest, inhale, get in eyes, on skin, or on clothing. Wash thoroughly after handling. Before use, the user must review the [complete](#) Safety Data Sheet, which has been sent via email to your institution.

WARRANTY AND LIMITATION OF REMEDY

Buyer agrees to purchase the material subject to Cayman's Terms and Conditions. Complete Terms and Conditions including Warranty and Limitation of Liability information can be found on our website.

Copyright Cayman Chemical Company, 06/28/2023

CAYMAN CHEMICAL

1180 EAST ELLSWORTH RD
ANN ARBOR, MI 48108 • USA

PHONE: [800] 364-9897
[734] 971-3335

FAX: [734] 971-3640

CUSTSERV@CAYMANCHEM.COM
WWW.CAYMANCHEM.COM