

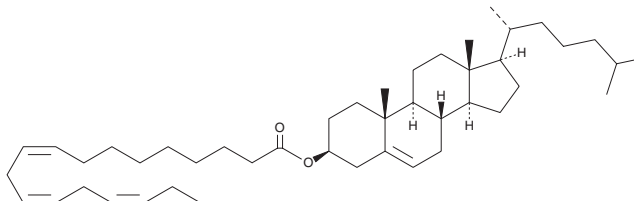
PRODUCT INFORMATION



Cholesterol α -Linolenate

Item No. 22596

CAS Registry No.: 2545-22-4
Formal Name: cholest-5-en-3 β -ol, 3-[(9Z,12Z,15Z)-9,12,15-octadecatrienoate]
Synonyms: Cholesteryl Linolenate,
Linolenic Acid cholesteryl ester
MF: C₄₅H₇₄O₂
FW: 647.1
Purity: \geq 98%
Supplied as: A neat oil
Storage: -20°C
Stability: \geq 4 years



Information represents the product specifications. Batch specific analytical results are provided on each certificate of analysis.

Laboratory Procedures

Cholesterol α -linolenate is supplied as a neat oil. A stock solution may be made by dissolving the cholesterol α -linolenate in the solvent of choice. Cholesterol α -linolenate is soluble in the organic solvent chloroform, which should be purged with an inert gas, at a concentration of approximately 10 mg/ml.

Description

Cholesterol α -linolenate is a cholesterol ester found in fatty streaks and atherosclerotic plaques isolated from human aorta.¹

Reference

1. Geer, J.C., Panganamala, R.V., and Cornwell, D.G. Position of double bonds in the fatty acids of cholesterol esters from human aorta. *Atherosclerosis* **12(1)**, 63-74 (1970).

WARNING

THIS PRODUCT IS FOR RESEARCH ONLY - NOT FOR HUMAN OR VETERINARY DIAGNOSTIC OR THERAPEUTIC USE.

SAFETY DATA

This material should be considered hazardous until further information becomes available. Do not ingest, inhale, get in eyes, on skin, or on clothing. Wash thoroughly after handling. Before use, the user must review the [complete](#) Safety Data Sheet, which has been sent via email to your institution.

WARRANTY AND LIMITATION OF REMEDY

Buyer agrees to purchase the material subject to Cayman's Terms and Conditions. Complete Terms and Conditions including Warranty and Limitation of Liability information can be found on our website.

Copyright Cayman Chemical Company, 11/28/2022

CAYMAN CHEMICAL

1180 EAST ELLSWORTH RD
ANN ARBOR, MI 48108 · USA

PHONE: [800] 364-9897
[734] 971-3335

FAX: [734] 971-3640

CUSTSERV@CAYMANCHEM.COM
WWW.CAYMANCHEM.COM