

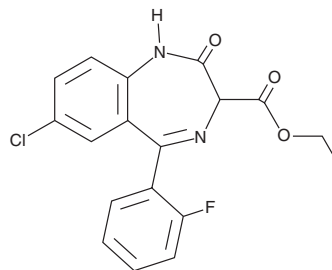
# PRODUCT INFORMATION



## Ethyl Loflazepate

Item No. 23630

**CAS Registry No.:** 29177-84-2  
**Formal Name:** 7-chloro-5-(2-fluorophenyl)-2,3-dihydro-2-oxo-1H-1,4-benzodiazepine-3-carboxylic acid, ethyl ester  
**Synonym:** CM6912  
**MF:** C<sub>18</sub>H<sub>14</sub>ClFN<sub>2</sub>O<sub>3</sub>  
**FW:** 360.8  
**Purity:** ≥98%  
**UV/Vis.:** λ<sub>max</sub>: 231 nm  
**Supplied as:** A crystalline solid  
**Storage:** -20°C  
**Stability:** ≥5 years



Information represents the product specifications. Batch specific analytical results are provided on each certificate of analysis.

### Description

Ethyl loflazepate (Item No. 23630) is an analytical reference standard categorized as a benzodiazepine.<sup>1</sup> Ethyl loflazepate is regulated as a Schedule IV compound in the United States. This product is intended for research and forensic applications.

### Reference

1. Chambon, J.P., Perio, A., Demarne, H., *et al.* Ethyl loflazepate: A prodrug from the benzodiazepine series designed to dissociate anxiolytic and sedative activities. *Arzneimittelforschung* **35(10)**, 1573-1577 (1985).

#### WARNING

THIS PRODUCT IS FOR RESEARCH ONLY - NOT FOR HUMAN OR VETERINARY DIAGNOSTIC OR THERAPEUTIC USE.

#### SAFETY DATA

This material should be considered hazardous until further information becomes available. Do not ingest, inhale, get in eyes, on skin, or on clothing. Wash thoroughly after handling. Before use, the user must review the [complete](#) Safety Data Sheet, which has been sent via email to your institution.

#### WARRANTY AND LIMITATION OF REMEDY

Buyer agrees to purchase the material subject to Cayman's Terms and Conditions. Complete Terms and Conditions including Warranty and Limitation of Liability information can be found on our website.

Copyright Cayman Chemical Company, 07/05/2023

#### CAYMAN CHEMICAL

1180 EAST ELLSWORTH RD  
ANN ARBOR, MI 48108 · USA

**PHONE:** [800] 364-9897  
[734] 971-3335

**FAX:** [734] 971-3640

CUSTSERV@CAYMANCHEM.COM  
WWW.CAYMANCHEM.COM