

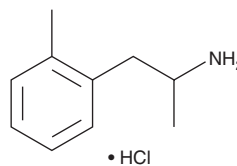
PRODUCT INFORMATION



2-Methylamphetamine (hydrochloride)

Item No. 24014

CAS Registry No.: 77083-24-0
Formal Name: α ,2-dimethyl-benzeneethanamine, monohydrochloride
Synonyms: α ,2-Dimethylbenzeneethanamine, o-Methylamphetamine, *ortho*-Methylamphetamine, 2-Tolyaminopropane, o-Tolyaminoproane, *ortho*-Tolyaminopropane, Ortetamine
MF: $C_{10}H_{15}N \cdot HCl$
FW: 185.7
Purity: $\geq 98\%$
UV/Vis.: λ_{max} : 211, 262 nm
Supplied as: A crystalline solid
Storage: $-20^{\circ}C$
Stability: ≥ 5 years



Information represents the product specifications. Batch specific analytical results are provided on each certificate of analysis.

Description

2-Methylamphetamine (hydrochloride) (Item No. 24014) is an analytical reference standard categorized as an amphetamine.¹ This product is intended for research and forensic applications.

Reference

1. Welter, J., Meyer, M.R., Kavanagh, P., *et al.* Studies on the metabolism and the detectability of 4-methylamphetamine and its isomers 2-methyl-amphetamine and 3-methyl-amphetamine in rat urine using GC-MS and LC-(high-resolution)-MSn. *Anal. Bioanal. Chem.* **406(7)**, 1957-1974 (2014).

WARNING

THIS PRODUCT IS FOR RESEARCH ONLY - NOT FOR HUMAN OR VETERINARY DIAGNOSTIC OR THERAPEUTIC USE.

SAFETY DATA

This material should be considered hazardous until further information becomes available. Do not ingest, inhale, get in eyes, on skin, or on clothing. Wash thoroughly after handling. Before use, the user must review the [complete](#) Safety Data Sheet, which has been sent via email to your institution.

WARRANTY AND LIMITATION OF REMEDY

Buyer agrees to purchase the material subject to Cayman's Terms and Conditions. Complete Terms and Conditions including Warranty and Limitation of Liability information can be found on our website.

Copyright Cayman Chemical Company, 06/21/2023

CAYMAN CHEMICAL

1180 EAST ELLSWORTH RD
ANN ARBOR, MI 48108 · USA

PHONE: [800] 364-9897
[734] 971-3335

FAX: [734] 971-3640

CUSTSERV@CAYMANCHEM.COM
WWW.CAYMANCHEM.COM