

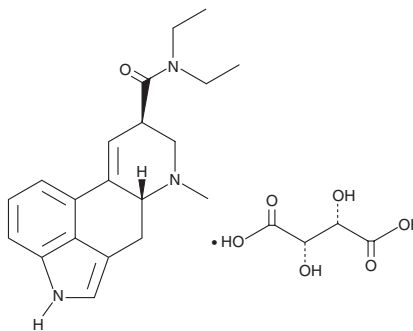
PRODUCT INFORMATION



LSD (D-tartrate) (solution)

Item No. 28289

CAS Registry No.: 32426-57-6
Formal Name: (8β)-9,10-didehydro-N,N-diethyl-6-methyl-ergoline-8-carboxamide, (2S,3S)-2,3-dihydroxybutanedioate
Synonyms: LAD, (+)-LSD, D-LSD, LSD-25, Lysergic Acid diethylamide
MF: C₂₀H₂₅N₃O • C₄H₆O₆
FW: 473.5
Supplied as: A 100 µg/ml solution in methanol
Storage: -20°C
Stability: ≥1 year



Information represents the product specifications. Batch specific analytical results are provided on each certificate of analysis.

Description

LSD (D-tartrate) (solution) (Item No. 28289) is an analytical reference material categorized as a lysergamide. LSD has hallucinogenic properties.¹ LSD is regulated as a Schedule I compound in the United States. This product is intended for research and forensic applications.

This product is qualified as a Reference Material that has been manufactured and tested to ISO/IEC 17025 and ISO 17034 international standards for reference materials.

Reference

1. Passie, T., Halpern, J.H., Stichtenoth, D.O., *et al.* The pharmacology of lysergic acid diethylamide: A review. *CNS Neurosci. Ther.* **14**(4), 295-314 (2008).

WARNING

THIS PRODUCT IS FOR RESEARCH ONLY - NOT FOR HUMAN OR VETERINARY DIAGNOSTIC OR THERAPEUTIC USE.

SAFETY DATA

This material should be considered hazardous until further information becomes available. Do not ingest, inhale, get in eyes, on skin, or on clothing. Wash thoroughly after handling. Before use, the user must review the [complete](#) Safety Data Sheet, which has been sent via email to your institution.

WARRANTY AND LIMITATION OF REMEDY

Buyer agrees to purchase the material subject to Cayman's Terms and Conditions. Complete Terms and Conditions including Warranty and Limitation of Liability information can be found on our website.

Copyright Cayman Chemical Company, 09/07/2023

CAYMAN CHEMICAL

1180 EAST ELLSWORTH RD
ANN ARBOR, MI 48108 · USA

PHONE: [800] 364-9897
[734] 971-3335

FAX: [734] 971-3640

CUSTSERV@CAYMANCHEM.COM
WWW.CAYMANCHEM.COM