

# PRODUCT INFORMATION



## Long-chain Fatty Acid Methyl Ester Mixture

Item No. 28645

**Supplied as:** A liquid  
**Storage:** -20°C  
**Stability:** ≥2 years

Information represents the product specifications. Batch specific analytical results are provided on each certificate of analysis.

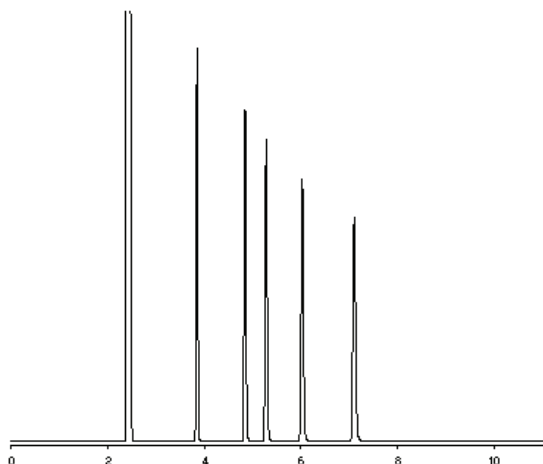
### Description and Data

Long-chain Fatty Acid Methyl Ester Mixture contains five saturated and mono- and poly-unsaturated long-chain fatty acid methyl esters. It is intended for use as a reference standard for the detection of long-chain fatty acids in various sample types by GC-MS. This mixture is supplied in an amber ampule in which the headspace has been purged with nitrogen/argon to prevent lipid oxidation.

Included are:

Elution Order*	Item Name	% Concentration by Weight
1	Palmitic Acid methyl ester	20
2	Stearic Acid methyl ester	20
3	Oleic Acid methyl ester	20
4	Linoleic Acid methyl ester	20
5	α-Linolenic Acid methyl ester	20

\*GC Column Used: SP-2330 or RTX-2330, 30 m x 0.25 mm x 0.2 μm



#### WARNING

THIS PRODUCT IS FOR RESEARCH ONLY - NOT FOR HUMAN OR VETERINARY DIAGNOSTIC OR THERAPEUTIC USE.

#### SAFETY DATA

This material should be considered hazardous until further information becomes available. Do not ingest, inhale, get in eyes, on skin, or on clothing. Wash thoroughly after handling. Before use, the user must review the [complete](#) Safety Data Sheet, which has been sent via email to your institution.

#### WARRANTY AND LIMITATION OF REMEDY

Buyer agrees to purchase the material subject to Cayman's Terms and Conditions. Complete Terms and Conditions including Warranty and Limitation of Liability information can be found on our website.

Copyright Cayman Chemical Company, 08/19/2022

#### CAYMAN CHEMICAL

1180 EAST ELLSWORTH RD  
ANN ARBOR, MI 48108 · USA

**PHONE:** [800] 364-9897

[734] 971-3335

**FAX:** [734] 971-3640

CUSTSERV@CAYMANCHEM.COM  
WWW.CAYMANCHEM.COM