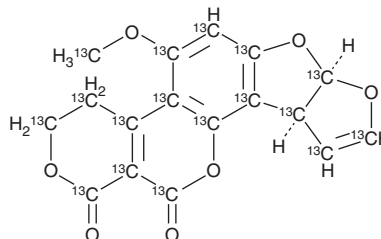


# PRODUCT INFORMATION



## Aflatoxin G<sub>1</sub>-<sup>13</sup>C<sub>17</sub> Item No. 31262

**CAS Registry No.:** 1217444-07-9  
**Formal Name:** (7aR,10aS)-5-(methoxy-<sup>13</sup>C)-3,4,7a,10a-tetrahydro-1H,12H-furo[3',2':4,5]furo[2,3-h]pyrano[3,4-c]chromene-1,12-dione-1,3,4,4a,4b,5,6,6a,7a,9,10,10a,10b,10c,12,12a-<sup>13</sup>C<sub>16</sub>  
**MF:** [<sup>13</sup>C]<sub>17</sub>H<sub>12</sub>O<sub>7</sub>  
**FW:** 345.1  
**Purity:** ≥98%  
**Supplied as:** A 0.5 µg/ml solution in acetonitrile  
**Storage:** -20°C  
**Stability:** ≥2 years



Information represents the product specifications. Batch specific analytical results are provided on each certificate of analysis.

### Description

Aflatoxin G<sub>1</sub>-<sup>13</sup>C<sub>17</sub> is intended for use as an internal standard for the quantification of aflatoxin G<sub>1</sub> (Item No. 11295) by GC- or LC-MS. Aflatoxin G<sub>1</sub> is a mycotoxin that has been found in *A. terricola*.<sup>1</sup> *In vivo*, aflatoxin G<sub>1</sub> is lethal to ducklings (LD<sub>50</sub> = 1.18 mg/kg).<sup>2</sup> It induces hepatocellular carcinoma tumor formation and lethality in rats when administered at doses of 1.4 and 3 mg/animal, respectively. Aflatoxin G<sub>1</sub> also inhibits liver and kidney succinate dehydrogenase and fumarase, as well as kidney cytochrome oxidase, NADH oxidase, α-glycerophosphate dehydrogenase, isocitrate dehydrogenase, and malate dehydrogenase in rats.<sup>3</sup>

### References

1. Moubasher, A.H., el-Kady, I.A., and Shoriet, A. Toxigenic *Aspergilli* isolated from different sources in Egypt. *Ann. Nutr. Aliment.* **31(4-6)**, 607-615 (1977).
2. Wogan, G.N., Edwards, G.S., and Newberne, P.M. Structure-activity relationships in toxicity and carcinogenicity of aflatoxins and analogs. *Cancer Res.* **31(12)**, 1936-1942 (1971).
3. Bai, N.J., Pai, M.R., and Venkitasubramanian, T.A. Mitochondrial function in aflatoxin toxicity. *Indian J. Biochem. Biophys.* **14(4)**, 347-349 (1977).

#### WARNING

THIS PRODUCT IS FOR RESEARCH ONLY - NOT FOR HUMAN OR VETERINARY DIAGNOSTIC OR THERAPEUTIC USE.

#### SAFETY DATA

This material should be considered hazardous until further information becomes available. Do not ingest, inhale, get in eyes, on skin, or on clothing. Wash thoroughly after handling. Before use, the user must review the complete Safety Data Sheet, which has been sent via email to your institution.

#### WARRANTY AND LIMITATION OF REMEDY

Buyer agrees to purchase the material subject to Cayman's Terms and Conditions. Complete Terms and Conditions including Warranty and Limitation of Liability information can be found on our website.

Copyright Cayman Chemical Company, 08/29/2023

#### CAYMAN CHEMICAL

1180 EAST ELLSWORTH RD  
ANN ARBOR, MI 48108 · USA

**PHONE:** [800] 364-9897

[734] 971-3335

**FAX:** [734] 971-3640

CUSTSERV@CAYMANCHEM.COM  
WWW.CAYMANCHEM.COM