

PRODUCT INFORMATION



Somatotropin Long Isoform (human, recombinant)

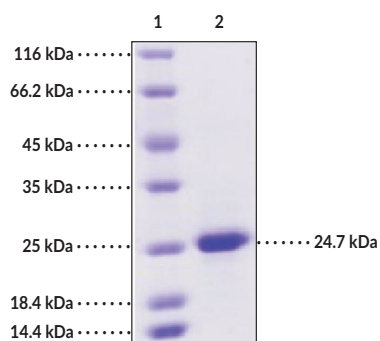
Item No. 32090

Overview and Properties

Synonyms: Growth Hormone 1, Pituitary Growth Hormone
Source: Recombinant human N-terminal His-tagged somatotropin expressed in *E. coli*
Amino Acids: 27-217
Uniprot No.: P01241
Molecular Weight: 24.7 kDa
Storage: -80°C (as supplied)
Stability: ≥1 year
Purity: ≥85% estimated by SDS-PAGE
Supplied in: Lyophilized from sterile PBS, pH 7.4
Bioactivity: See figures for details

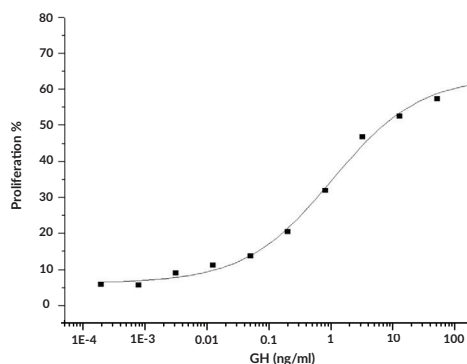
Information represents the product specifications. Batch specific analytical results are provided on each certificate of analysis.

Images



Lane 1: MW Markers
Lane 2: Somatotropin Long Isoform

SDS-PAGE Analysis of Somatotropin Long Isoform.



Ability of Somatotropin Long Isoform to promote proliferation of INS-1 cells. The EC₅₀ value for this effect is typically 0.3-1.6 ng/ml.

WARNING
THIS PRODUCT IS FOR RESEARCH ONLY - NOT FOR HUMAN OR VETERINARY DIAGNOSTIC OR THERAPEUTIC USE.

SAFETY DATA
This material should be considered hazardous until further information becomes available. Do not ingest, inhale, get in eyes, on skin, or on clothing. Wash thoroughly after handling. Before use, the user must review the complete Safety Data Sheet, which has been sent via email to your institution.

WARRANTY AND LIMITATION OF REMEDY
Buyer agrees to purchase the material subject to Cayman's Terms and Conditions. Complete Terms and Conditions including Warranty and Limitation of Liability information can be found on our website.

Copyright Cayman Chemical Company, 07/08/2020

CAYMAN CHEMICAL
1180 EAST ELLSWORTH RD
ANN ARBOR, MI 48108 · USA
PHONE: [800] 364-9897
[734] 971-3335
FAX: [734] 971-3640
CUSTSERV@CAYMANCHEM.COM
WWW.CAYMANCHEM.COM

PRODUCT INFORMATION



Description

Somatotropin is a circulating peptide hormone encoded by *GH1* in humans that has roles in growth, cellular proliferation and differentiation, muscle and bone anabolism, and lipolysis.¹ Alternative splicing of the *GH1* pre-mRNA produces one full-length 22 kDa isoform and a short-length 20 kDa isoform, which has reduced affinity for the somatotropin receptor.² Somatotropin contains a central hydrophobic core and a bundle of four α -helices that forms two somatotropin receptor binding sites.³ It is synthesized and stored by somatotrophs in the anterior pituitary gland and is secreted episodically as a monomer or dimer in a circadian rhythm that peaks during night sleep.^{2,3} Somatotropin production is induced by stimulation with growth hormone-releasing hormone, ghrelin, or sex steroids and inhibited by somatostatin, IGF-1, or glucocorticoid stimulation.⁴ Binding of somatotropin to the somatotropin receptor, which is ubiquitously expressed, activates a variety of intracellular signal transduction pathways, including JAK-STAT, that lead to IGF-1, MAPK, PPAR γ (Item No. 61700), or SIRP α signaling.^{1,3,5} Decreased serum levels of somatotropin have been found in patients with dwarfism.⁶ Increased somatotropin serum levels have been found in patients with acromegaly, a condition characterized by abnormal bone growth, and are positively correlated with early mortality.^{6,7} Cayman's Somatotropin Long Isoform (human, recombinant) protein can be used for cell-based assay applications. This protein consists of 212 amino acids and has a calculated molecular weight of 24.7 kDa.

References

1. Devesa, J., Almengló, C., and Devesa, P. Multiple effects of growth hormone in the body: Is it really the hormone for growth? *Clin. Med. Insights Endocrinol. Diabetes* **9**, 47-71 (2016).
2. Baumann, G.P. Growth hormone isoforms. *Growth Horm. IGF Res.* **19(4)**, 333-340 (2009).
3. Ranke, M.B. and Wit, J.M. Growth hormone – past, present and future. *Nat. Rev. Endocrinol.* **14(5)**, 285-300 (2018).
4. Lin, S., Li, C., Li, C., *et al.* Growth hormone receptor mutations related to individual dwarfism. *Int. J. Mol. Sci.* **19(5)**, 1433 (2018).
5. Fernández-Pérez, L., Flores-Morales, A., Guerra, B., *et al.* Growth hormone receptor signaling pathways and its negative regulation by SOCS2. *Mol. Endocrinol.* **20(2)**, 241-253 (2016).
6. Murray, R.A., Maheshwari, H.G., Russell, E.J., *et al.* Pituitary hypoplasia in patients with a mutation in the growth hormone-releasing hormone receptor gene. *Am. J. Neuroradiol.* **21(4)**, 685-689 (2000).
7. Kopchick, J.J., List, E.O., Kelder, B., *et al.* Evaluation of growth hormone (GH) action in mice: Discovery of GH receptor antagonists and clinical indications. *Mol. Cell Endocrinol.* **386(1-2)**, 34-45 (2014).