

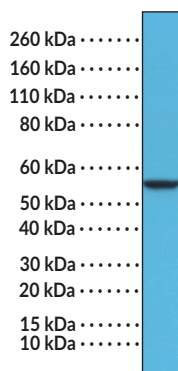
# PRODUCT INFORMATION

## Cytokeratin 8 (C-Term) Rabbit Monoclonal Antibody (Clone RM266) Item No. 32216

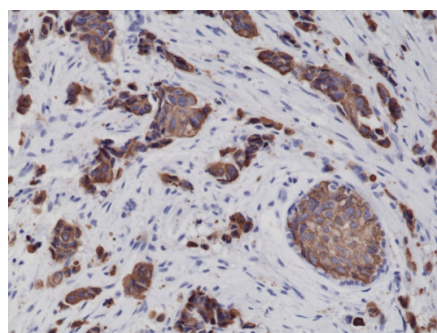
### Overview and Properties

<b>Contents:</b>	This vial contains 100 µl of protein A-affinity purified monoclonal antibody.
<b>Synonyms:</b>	CK-8, Keratin, Type II Cytoskeletal 8, Keratin-8, KRT8
<b>Immunogen:</b>	Peptide from the C-terminal region of human cytokeratin 8
<b>Cross Reactivity:</b>	(+) Cytokeratin 8
<b>Species Reactivity:</b>	(+) Human
<b>Form:</b>	Liquid
<b>Storage:</b>	-20°C (as supplied)
<b>Stability:</b>	≥1 year
<b>Storage Buffer:</b>	PBS with 50% glycerol, 1% BSA, and 0.09% sodium azide
<b>Clone:</b>	RM266
<b>Host:</b>	Rabbit
<b>Isotype:</b>	IgG
<b>Applications:</b>	Immunohistochemistry (IHC) and Western blot (WB); the recommended starting dilution for IHC and WB is 1:1,000-1:2,000. Other applications were not tested, therefore optimal working concentration/dilution should be determined empirically.

### Images



WB of HeLa cell lysates using Cytokeratin 8 (C-Term) Rabbit Monoclonal Antibody (Clone RM266) at a dilution of 1:1,000.



Immunohistochemical staining of formalin-fixed and paraffin-embedded human breast cancer tissue sections using Cytokeratin 8 (C-Term) Rabbit Monoclonal Antibody (Clone RM266) at a dilution of 1:2,000.

**WARNING**  
THIS PRODUCT IS FOR RESEARCH ONLY - NOT FOR HUMAN OR VETERINARY DIAGNOSTIC OR THERAPEUTIC USE.

**SAFETY DATA**  
This material should be considered hazardous until further information becomes available. Do not ingest, inhale, get in eyes, on skin, or on clothing. Wash thoroughly after handling. Before use, the user must review the complete Safety Data Sheet, which has been sent via email to your institution.

**WARRANTY AND LIMITATION OF REMEDY**  
Buyer agrees to purchase the material subject to Cayman's Terms and Conditions. Complete Terms and Conditions including Warranty and Limitation of Liability information can be found on our website.

Copyright Cayman Chemical Company, 01/31/2024

**CAYMAN CHEMICAL**  
1180 EAST ELLSWORTH RD  
ANN ARBOR, MI 48108 · USA  
PHONE: [800] 364-9897  
[734] 971-3335  
FAX: [734] 971-3640  
CUSTSERV@CAYMANCHEM.COM  
WWW.CAYMANCHEM.COM

# PRODUCT INFORMATION



## Description

---

Cytokeratin 8 is a type II epithelial intermediate filament protein.<sup>1</sup> It is composed of a central rod containing four  $\alpha$ -helical domains, which are important for self-assembly, and non-helical head and tail domains at the N- and C-termini, respectively. Cytokeratin 8 is expressed in single-layered epithelial cells and epithelial-derived tumor cells.<sup>2</sup> It dimerizes with the type I epithelial intermediate filament protein cytokeratin 18 to form a network of filament bundles throughout the cytoplasm.<sup>3</sup> The tail of cytokeratin 8 binds to plasminogen and mediates invasiveness of cancer cells *in vitro*.<sup>4</sup> A null mutation in *KRT8*, the gene encoding cytokeratin 8, is embryonic lethal in C57BL/6 x 129Sv, but not FVB/N, mice, which develop colorectal hyperplasia.<sup>5</sup> Substitution mutations in *KRT8*, corresponding to residues in the head domain of the protein, disrupt filament reorganization following oxidative and non-oxidative stress *in vitro* and are associated with cryptogenic liver disease.<sup>2</sup> Intratumoral levels of cytokeratin 8 and -18 are correlated with poor prognosis in patients with squamous cell carcinomas of the oral cavity.<sup>6</sup> Cayman's Cytokeratin 8 (C-Term) Rabbit Monoclonal Antibody (Clone RM266) can be used for immunohistochemistry (IHC) and Western blot (WB) applications.

## References

---

1. Gu, L.-H. and Coulombe, P.A. Keratin function in skin epithelia: A broadening palette with surprising shades. *Curr. Opin. Cell Biol.* **19(1)**, 13-23 (2007).
2. Ku, N.-O., Gish, R., Wright, T.L., *et al.* Keratin 8 mutations in patients with cryptogenic liver disease. *N. Engl. J. Med.* **344(21)**, 1580-1587 (2001).
3. Gonias, S.L., Hembrough, T.A., and Sankovic, M. Cytokeratin 8 functions as a major plasminogen receptor in select epithelial and carcinoma cells. *Front Biosci.* **6**, 1403-1411 (2001).
4. Obermajer, N., Doljak, B., and Kos, J. Cytokeratin 8 ectoplasmic domain binds urokinase-type plasminogen activator to breast tumor cells and modulates their adhesion, growth and invasiveness. *Mol. Cancer* **8**, 88 (2009).
5. Baribault, H., Penner, J., Iozzo, R.V., *et al.* Colorectal hyperplasia and inflammation in keratin 8-deficient FVB/N mice. *Genes Dev.* **8(24)**, 2964-2973 (1994).
6. Fillies, T., Werkmeister, R., Packeisen, J., *et al.* Cytokeratin 8/18 expression indicates a poor prognosis in squamous cell carcinomas of the oral cavity. *BMC Cancer* **6**, 10 (2006).

CAYMAN CHEMICAL  
1180 EAST ELLSWORTH RD  
ANN ARBOR, MI 48108 · USA  
PHONE: [800] 364-9897  
[734] 971-3335  
FAX: [734] 971-3640  
CUSTSERV@CAYMANCHEM.COM  
WWW.CAYMANCHEM.COM