

PRODUCT INFORMATION



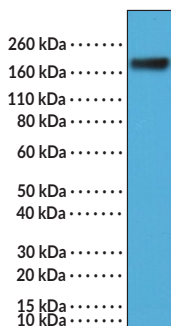
CEA Rabbit Monoclonal Antibody (Clone RM326)

Item No. 32264

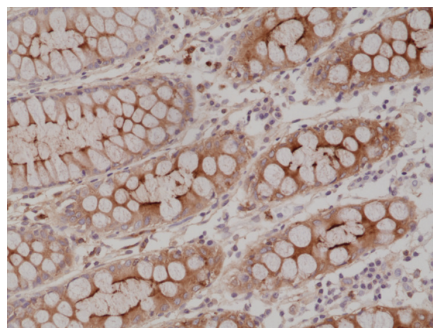
Overview and Properties

Contents:	This vial contains 100 µl of protein A-affinity purified monoclonal antibody.
Synonym:	Carcinoembryonic Antigen
Immunogen:	Native CEA protein purified from human liver tissue
Cross Reactivity:	(+) CEA
Species Reactivity:	(+) Human
Form:	Liquid
Storage:	-20°C (as supplied)
Stability:	≥1 year
Storage Buffer:	PBS with 50% glycerol, 1% BSA, and 0.09% sodium azide
Clone:	RM326
Host:	Rabbit
Isotype:	IgG
Applications:	ELISA, Immunohistochemistry (IHC), and Western blot (WB); the recommended starting dilution is 1:1,000-1:5,000 for ELISA and 1:1,000-1:2,000 for IHC and WB. Other applications were not tested, therefore optimal working concentration/dilution should be determined empirically.

Images



WB of MCF-7 cell lysates using CEA Rabbit Monoclonal Antibody (Clone RM326) at a dilution of 1:1,000.



Immunohistochemical staining of formalin-fixed and paraffin-embedded human colon tissue using CEA Rabbit Monoclonal Antibody (Clone RM326) at a dilution of 1:2,000.

WARNING
THIS PRODUCT IS FOR RESEARCH ONLY - NOT FOR HUMAN OR VETERINARY DIAGNOSTIC OR THERAPEUTIC USE.

SAFETY DATA
This material should be considered hazardous until further information becomes available. Do not ingest, inhale, get in eyes, on skin, or on clothing. Wash thoroughly after handling. Before use, the user must review the complete Safety Data Sheet, which has been sent via email to your institution.

WARRANTY AND LIMITATION OF REMEDY
Buyer agrees to purchase the material subject to Cayman's Terms and Conditions. Complete Terms and Conditions including Warranty and Limitation of Liability information can be found on our website.

Copyright Cayman Chemical Company, 01/30/2024

CAYMAN CHEMICAL
1180 EAST ELLSWORTH RD
ANN ARBOR, MI 48108 · USA
PHONE: [800] 364-9897
[734] 971-3335
FAX: [734] 971-3640
CUSTSERV@CAYMANCHEM.COM
WWW.CAYMANCHEM.COM

PRODUCT INFORMATION



Description

Carcinoembryonic antigen (CEA) is a glycoprotein and member of the immunoglobulin (Ig) superfamily with a role in cell adhesion.¹⁻³ It is composed of an N-terminal Ig variable domain-like (IgV-like) domain, six Ig constant 2-like (IgC2-like) domains, and a glycosylphosphatidylinositol (GPI) anchor that is attached to the cell membrane.¹ CEA is expressed during fetal development but is absent by birth and is not present in adults.³ However, CEA is expressed by human colon carcinomas where it functions as a ligand for E-selectin and L-selectin that is essential to cancer metastasis. Levels of CEA are positively correlated with risk of recurrence and death in patients with non-small cell lung cancer (NSCLC). Cayman's CEA Rabbit Monoclonal Antibody (Clone RM326) can be used for ELISA, immunohistochemistry (IHC), and Western blot (WB) applications.

References

1. Duffy, M.J. Carcinoembryonic antigen as a marker for colorectal cancer: Is it clinically useful? *Clin. Chem.* **47(4)**, 624-630 (2001).
2. Benchimol, S., Fuks, A., Jothy, S., *et al.* Carcinoembryonic antigen, a human tumor marker functions as an intercellular adhesion molecule. *Cell* **57**, 327-334 (1989).
3. Grunnet, M. and Sorensen, J.B. Carcinoembryonic antigen (CEA) as tumor marker in lung cancer. *Lung Cancer* **76(2)**, 138-143 (2012).

CAYMAN CHEMICAL
1180 EAST ELLSWORTH RD
ANN ARBOR, MI 48108 · USA
PHONE: [800] 364-9897
[734] 971-3335
FAX: [734] 971-3640
CUSTSERV@CAYMANCHEM.COM
WWW.CAYMANCHEM.COM