

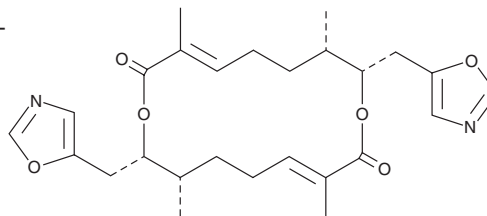
PRODUCT INFORMATION



Conglobatin C1

Item No. 33256

CAS Registry No.: 2673270-37-4
Formal Name: 3E,7S,11E,15S-tetramethyl-8S,16S-bis(5-oxazolylmethyl)-1,9-dioxacyclohexadeca-3,11-diene-2,10-dione
MF: C₂₆H₃₄N₂O₆
FW: 470.6
Purity: ≥95%
Supplied as: A solid
Storage: -20°C
Stability: ≥4 years
Item Origin: Bacterium/*Streptomyces conglobatus*



Information represents the product specifications. Batch specific analytical results are provided on each certificate of analysis.

Laboratory Procedures

Conglobatin C1 is supplied as a solid. A stock solution may be made by dissolving the conglobatin C1 in the solvent of choice, which should be purged with an inert gas. Conglobatin C1 is soluble in methanol and DMSO.

Description

Conglobatin C1 is a bacterial metabolite that has been found in *Streptomyces* MST-91080 and has anticancer activity.¹ It is cytotoxic to NS-1 mouse myeloma cells (IC₅₀ = 1.05 µg/ml) but not NFF human fibroblasts (IC₅₀ = >100 µg/ml).

Reference

1. Lacey, H.J., Booth, T.J., Vuong, D., *et al.* Conglobatins B-E: Cytotoxic analogues of the C₂-symmetric macrodiolide conglobatin. *J. Antibiot. (Tokyo)* **73(11)**, 756-765 (2020).

WARNING

THIS PRODUCT IS FOR RESEARCH ONLY - NOT FOR HUMAN OR VETERINARY DIAGNOSTIC OR THERAPEUTIC USE.

SAFETY DATA

This material should be considered hazardous until further information becomes available. Do not ingest, inhale, get in eyes, on skin, or on clothing. Wash thoroughly after handling. Before use, the user must review the [complete](#) Safety Data Sheet, which has been sent via email to your institution.

WARRANTY AND LIMITATION OF REMEDY

Buyer agrees to purchase the material subject to Cayman's Terms and Conditions. Complete Terms and Conditions including Warranty and Limitation of Liability information can be found on our website.

Copyright Cayman Chemical Company, 08/25/2023

CAYMAN CHEMICAL

1180 EAST ELLSWORTH RD
ANN ARBOR, MI 48108 · USA

PHONE: [800] 364-9897
[734] 971-3335

FAX: [734] 971-3640

CUSTSERV@CAYMANCHEM.COM
WWW.CAYMANCHEM.COM