

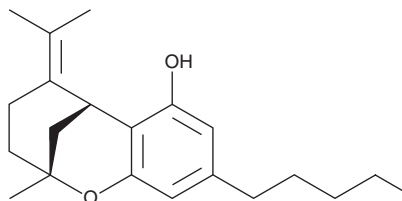
PRODUCT INFORMATION



$\Delta^{4(8)}$ -iso-THC

Item No. 33863

CAS Registry No.: 23050-59-1
Formal Name: 3,4,5,6-tetrahydro-2-methyl-5-(1-methylethylidene)-9-pentyl-2R,6R-methano-2H-1-benzoxocin-7-ol
Synonym: $\Delta^{4(8)}$ -Isotetrahydrocannabinol
MF: C₂₁H₃₀O₂
FW: 314.5
Purity: ≥98%
UV/Vis.: λ_{max}: 212 nm
Supplied as: A solution in acetonitrile
Storage: -20°C
Stability: ≥2 years



Information represents the product specifications. Batch specific analytical results are provided on each certificate of analysis.

Description

$\Delta^{4(8)}$ -iso-THC (Item No. 33863) is an analytical reference standard that is structurally similar to known phytocannabinoids.¹ $\Delta^{4(8)}$ -iso-THC has been found as an impurity in the conversion of cannabidiol (Item Nos. ISO60156 | 90080) to Δ^8 -THC (Item Nos. ISO60158 | 14042) or Δ^9 -THC (Item Nos. ISO60157 | 12068). This product is intended for research and forensic applications.

Reference

1. Nalli, Y., Jan, S., Lauro, G., *et al.* Isolation, synthesis and structure determination of cannabidiol derivatives and their cytotoxic activities. *Nat. Prod. Res.* **35(3)**, 471-480 (2021).

WARNING

THIS PRODUCT IS FOR RESEARCH ONLY - NOT FOR HUMAN OR VETERINARY DIAGNOSTIC OR THERAPEUTIC USE.

SAFETY DATA

This material should be considered hazardous until further information becomes available. Do not ingest, inhale, get in eyes, on skin, or on clothing. Wash thoroughly after handling. Before use, the user must review the [complete](#) Safety Data Sheet, which has been sent via email to your institution.

WARRANTY AND LIMITATION OF REMEDY

Buyer agrees to purchase the material subject to Cayman's Terms and Conditions. Complete Terms and Conditions including Warranty and Limitation of Liability information can be found on our website.

Copyright Cayman Chemical Company, 07/12/2023

CAYMAN CHEMICAL

1180 EAST ELLSWORTH RD
ANN ARBOR, MI 48108 · USA

PHONE: [800] 364-9897
[734] 971-3335

FAX: [734] 971-3640

CUSTSERV@CAYMANCHEM.COM
WWW.CAYMANCHEM.COM