

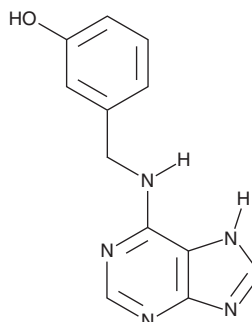
# PRODUCT INFORMATION



## meta-Topolin

Item No. 34122

**CAS Registry No.:** 75737-38-1  
**Formal Name:** 3-[(9H-purin-6-ylamino)methyl]-phenol  
**Synonyms:** 6-*m*-Hydroxybenzylaminopurine,  
6-*meta*-Hydroxybenzylaminopurine,  
*m*-Topolin  
**MF:** C<sub>12</sub>H<sub>11</sub>N<sub>5</sub>O  
**FW:** 241.3  
**Purity:** ≥98%  
**UV/Vis.:** λ<sub>max</sub>: 271 nm  
**Supplied as:** A solid  
**Storage:** -20°C  
**Stability:** ≥4 years  
**Item Origin:** Synthetic



Information represents the product specifications. Batch specific analytical results are provided on each certificate of analysis.

### Laboratory Procedures

*meta*-Topolin is supplied as a solid. A stock solution may be made by dissolving the *meta*-topolin in the solvent of choice, which should be purged with an inert gas. *meta*-Topolin is soluble in organic solvents such as ethanol and dimethyl formamide. The solubility of *meta*-topolin in these solvents is approximately 30 and 10 mg/ml, respectively.

*meta*-Topolin is sparingly soluble in aqueous buffers. For maximum solubility in aqueous buffers, *meta*-topolin should first be dissolved in DMSO and then diluted with the aqueous buffer of choice. *meta*-Topolin has a solubility of approximately 0.16 mg/ml in a 1:5 solution of DMSO:PBS (pH 7.2) using this method. We do not recommend storing the aqueous solution for more than one day.

### Description

*meta*-Topolin is a cytokinin that has been found in *Populus canadensis*.<sup>1,2</sup> It increases root and shoot growth of *A. polyphylla* when used at concentrations ranging from 0.5 to 15 μM.<sup>2</sup> *meta*-Topolin (5 μM) also increases soybean mean callus yield.

### References

1. Strnad, M., Hanuš, J., Vaněk, T., *et al.* *Meta*-topolin, a highly active aromatic cytokinin from poplar leaves (*Populus x canadensis* Moench., cv. Robusta). *Phytochemistry* **45(2)**, 213-218 (2010).
2. Bairu, M.W., Stirk, W.A., Dolezal, K., *et al.* Optimizing the micropropagation protocol for the endangered *Aloe polyphylla*: Can *meta*-topolin and its derivatives serve as replacement for benzyladenine and zeatin? *Plant Cell Tiss. Organ Cult.* **90**, 15-23 (2007).

#### WARNING

THIS PRODUCT IS FOR RESEARCH ONLY - NOT FOR HUMAN OR VETERINARY DIAGNOSTIC OR THERAPEUTIC USE.

#### SAFETY DATA

This material should be considered hazardous until further information becomes available. Do not ingest, inhale, get in eyes, on skin, or on clothing. Wash thoroughly after handling. Before use, the user must review the complete Safety Data Sheet, which has been sent via email to your institution.

#### WARRANTY AND LIMITATION OF REMEDY

Buyer agrees to purchase the material subject to Cayman's Terms and Conditions. Complete Terms and Conditions including Warranty and Limitation of Liability information can be found on our website.

Copyright Cayman Chemical Company, 11/03/2022

#### CAYMAN CHEMICAL

1180 EAST ELLSWORTH RD

ANN ARBOR, MI 48108 · USA

**PHONE:** [800] 364-9897

[734] 971-3335

**FAX:** [734] 971-3640

CUSTSERV@CAYMANCHEM.COM

WWW.CAYMANCHEM.COM