

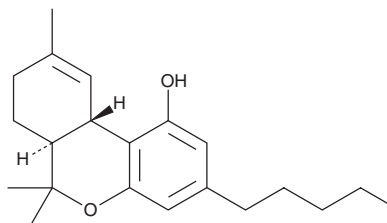
PRODUCT INFORMATION



(+)- Δ^9 -THC (exempt preparation)

Item No. 34628

CAS Registry No.: 17766-02-8
Formal Name: 6aS,7,8,10aS-tetrahydro-6,6,9-trimethyl-3-pentyl-6H-dibenzo[b,d]pyran-1-ol
Synonym: (+)- Δ^9 -Tetrahydrocannabinol
MF: C₂₁H₃₀O₂
FW: 314.5
Purity: $\geq 95\%$
Supplied as: A solution in acetonitrile
Storage: -20°C
Stability: ≥ 1 year



Information represents the product specifications. Batch specific analytical results are provided on each certificate of analysis.

Description

(+)- Δ^9 -THC (exempt preparation) (Item No. 34628) is an analytical reference standard categorized as a synthetic cannabinoid.¹ It is an isomer of (-)- Δ^9 -THC, the primary psychoactive component of *Cannabis*, that has psychoactive properties. (+)- Δ^9 -THC is regulated as a Schedule I compound in the United States. (+)- Δ^9 -THC (exempt preparation) (Item No. 34628) is provided as a DEA exempt preparation. This product is intended for research and forensic applications.

Reference

1. Martin, B.R., Balster, R.L., Razdan, R.K., et al. Behavioral comparisons of the stereoisomers of tetrahydrocannabinols. *Life Sci.* **29(6)**, 565-574 (1981).

WARNING

THIS PRODUCT IS FOR RESEARCH ONLY - NOT FOR HUMAN OR VETERINARY DIAGNOSTIC OR THERAPEUTIC USE.

SAFETY DATA

This material should be considered hazardous until further information becomes available. Do not ingest, inhale, get in eyes, on skin, or on clothing. Wash thoroughly after handling. Before use, the user must review the [complete](#) Safety Data Sheet, which has been sent via email to your institution.

WARRANTY AND LIMITATION OF REMEDY

Buyer agrees to purchase the material subject to Cayman's Terms and Conditions. Complete Terms and Conditions including Warranty and Limitation of Liability information can be found on our website.

Copyright Cayman Chemical Company, 08/10/2021

CAYMAN CHEMICAL

1180 EAST ELLSWORTH RD
ANN ARBOR, MI 48108 · USA

PHONE: [800] 364-9897
[734] 971-3335

FAX: [734] 971-3640

CUSTSERV@CAYMANCHEM.COM
WWW.CAYMANCHEM.COM