

# PRODUCT INFORMATION



## GST-tag Monoclonal Antibody (Clone 6C10G4)

Item No. 37070

### Overview and Properties

**Contents:** This vial contains 50, 100, or 200  $\mu$ l, or 1 ml of protein A-affinity purified monoclonal antibody.

**Synonym:** Glutathione S-Transferase

**Immunogen:** Recombinant *S. japonicum* GST expressed in *E. coli*

**Cross Reactivity:** (+) GST fusion proteins

**Species Reactivity:** (+) *S. japonicum*; other species not tested

**Form:** Liquid

**Storage:** -80°C (as supplied)

**Stability:**  $\geq$ 1 year

**Storage Buffer:** 0.2  $\mu$ m filtered solution in PBS

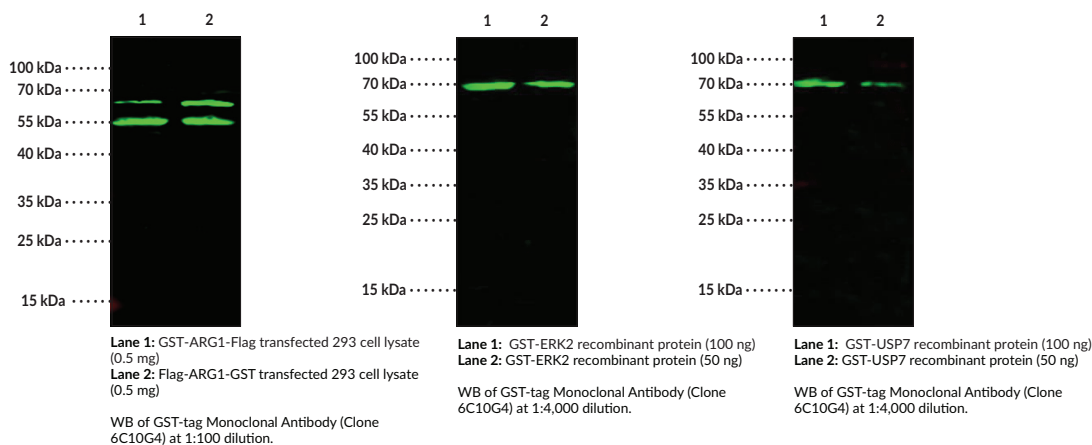
**Clone:** 6C10G4

**Host:** Mouse

**Isotype:** IgG1

**Applications:** Immunoprecipitation (IP) and Western blot (WB); the recommended starting concentration is 1-4  $\mu$ l/mg of lysate for IP. The recommended starting dilution is 1:1,000-1:10,000 for WB. Other applications were not tested, therefore optimal working concentration/dilution should be determined empirically.

### Images



**WARNING**  
THIS PRODUCT IS FOR RESEARCH ONLY - NOT FOR HUMAN OR VETERINARY DIAGNOSTIC OR THERAPEUTIC USE.

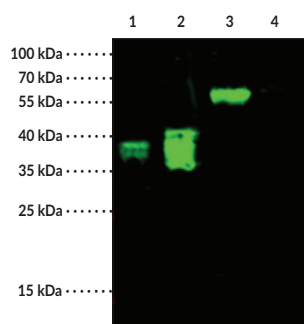
**SAFETY DATA**  
This material should be considered hazardous until further information becomes available. Do not ingest, inhale, get in eyes, on skin, or on clothing. Wash thoroughly after handling. Before use, the user must review the [complete](#) Safety Data Sheet, which has been sent via email to your institution.

**WARRANTY AND LIMITATION OF REMEDY**  
Buyer agrees to purchase the material subject to Cayman's Terms and Conditions. Complete Terms and Conditions including Warranty and Limitation of Liability information can be found on our website.

Copyright Cayman Chemical Company, 07/11/2022

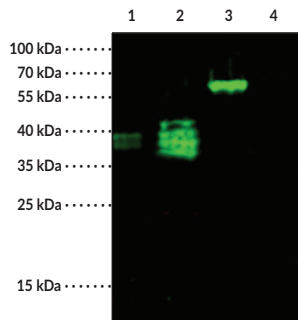
**CAYMAN CHEMICAL**  
1180 EAST ELLSWORTH RD  
ANN ARBOR, MI 48108 · USA  
PHONE: [800] 364-9897  
[734] 971-3335  
FAX: [734] 971-3640  
CUSTSERV@CAYMANCHEM.COM  
WWW.CAYMANCHEM.COM

# PRODUCT INFORMATION



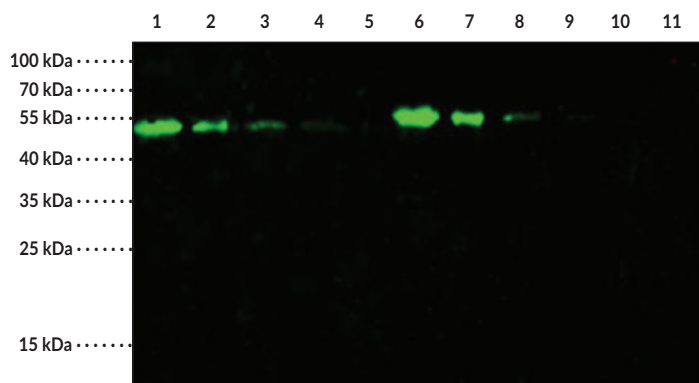
**Lane 1:** GST-FABP4-flag transfected 293 cell lysate (30 µg)  
**Lane 2:** flag-FABP4-GST transfected 293 cell lysate (30 µg)  
**Lane 3:** flag-AGR1-GST transfected 293 cell lysate (30 µg)  
**Lane 4:** Negative control

WB of GST-tag Monoclonal Antibody (Clone 6C10G4) at 1:1,250 dilution.



**Lane 1:** GST-FABP4-flag transfected 293 cell lysate (30 µg)  
**Lane 2:** flag-FABP4-GST transfected 293 cell lysate (30 µg)  
**Lane 3:** flag-AGR1-GST transfected 293 cell lysate (30 µg)  
**Lane 4:** Negative control

WB of GST-tag Monoclonal Antibody (Clone 6C10G4) at 1:2,500 dilution.

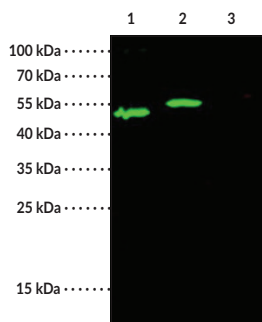


**Lane 1:** GST-mBID transfected *E.coli* cell lysate (0.5 µg)  
**Lane 2:** GST-mBID transfected *E.coli* cell lysate (0.2 µg)  
**Lane 3:** GST-mBID transfected *E.coli* cell lysate (0.1 µg)  
**Lane 4:** GST-mBID transfected *E.coli* cell lysate (0.05 µg)  
**Lane 5:** GST-mBID transfected *E.coli* cell lysate (0.02 µg)  
**Lane 6:** GST-YWHAB transfected *E.coli* cell lysate (0.5 µg)  
**Lane 7:** GST-YWHAB transfected *E.coli* cell lysate (0.2 µg)  
**Lane 8:** GST-YWHAB transfected *E.coli* cell lysate (0.1 µg)  
**Lane 9:** GST-YWHAB transfected *E.coli* cell lysate (0.05 µg)  
**Lane 10:** GST-YWHAB transfected *E.coli* cell lysate (0.02 µg)  
**Lane 11:** Empty vector (0.5 µg)

WB of GST-tag Monoclonal Antibody (Clone 6C10G4) at 1:25,000 dilution.

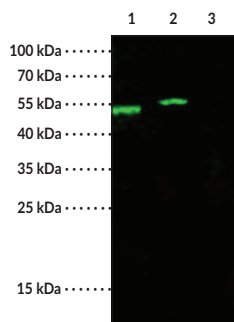
CAYMAN CHEMICAL  
 1180 EAST ELLSWORTH RD  
 ANN ARBOR, MI 48108 · USA  
 PHONE: [800] 364-9897  
 [734] 971-3335  
 FAX: [734] 971-3640  
 CUSTSERV@CAYMANCHEM.COM  
 WWW.CAYMANCHEM.COM

# PRODUCT INFORMATION



Lane 1: GST-mBID transfected *E.coli* cell lysate (0.1 µg)  
Lane 2: GST-YWHAB transfected *E.coli* cell lysate (0.1 µg)  
Lane 3: Empty vector (0.1 µg)

WB of GST-tag Monoclonal Antibody (Clone 6C10G4) at 1:25,000 dilution.



Lane 1: GST-mBID transfected *E.coli* cell lysate (0.2 µg)  
Lane 2: GST-YWHAB transfected *E.coli* cell lysate (0.2 µg)  
Lane 3: Empty vector (0.2 µg)

WB of GST-tag Monoclonal Antibody (Clone 6C10G4) at 1:25,000 dilution.

## Description

GST-tag Monoclonal Antibody (Clone 6C10G4) is a probe for the immunochemical detection of GST-tags on recombinant proteins. Recombinant proteins are commonly labeled with affinity tags, such as GST, to facilitate both their detection and purification.<sup>1</sup> GST-tags are commonly utilized to increase protein solubility and enhance expression efficiency. Cayman's GST-tag Monoclonal Antibody (Clone 6C10G4) can be used for immunoprecipitation (IP) and Western blot (WB) applications. It recognizes proteins containing GST-tags and proteins containing GST- and DYKDDDDK-tags.

## Reference

1. Zhao, X., Li, G., and Liang, S. Several affinity tags commonly used in chromatographic purification. *J. Anal. Methods Chem.* 581093 (2013).

CAYMAN CHEMICAL  
1180 EAST ELLSWORTH RD  
ANN ARBOR, MI 48108 · USA  
PHONE: [800] 364-9897  
[734] 971-3335  
FAX: [734] 971-3640  
CUSTSERV@CAYMANCHEM.COM  
WWW.CAYMANCHEM.COM