

PRODUCT INFORMATION



SLB1122168

Item No. 39427

Formal Name: (S)-6-decyl-N-(pyrrolidin-3-ylmethyl)benzo[d]
oxazol-2-amine, monohydrochloride

MF: C₂₂H₃₅N₃O • HCl

FW: 394.0

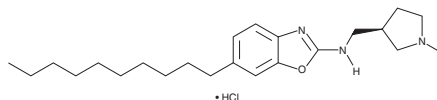
Purity: ≥98%

UV/Vis.: λ_{max}: 246 nm

Supplied as: A solid

Storage: -20°C

Stability: ≥2 years



Information represents the product specifications. Batch specific analytical results are provided on each certificate of analysis.

Laboratory Procedures

SLB1122168 is supplied as a solid. A stock solution may be made by dissolving the SLB1122168 in the solvent of choice, which should be purged with an inert gas. SLB1122168 is soluble in ethanol and methanol.

Description

SLB1122168 is an inhibitor of the sphingosine-1-phosphate (S1P) transporter Spns2 (IC₅₀ = 94 nM for the mouse transporter).¹ It decreases the number of circulating lymphocytes but does not affect plasma S1P levels in mice when administered at a dose of 10 mg/kg.

Reference

1. Burgio, A.L., Shrader, C.W., Kharel, Y., *et al.* 2-Aminobenzoxazole derivatives as potent inhibitors of the sphingosine-1-phosphate transporter spinster homolog 2 (Spns2). *J. Med. Chem.* **66**(8), 5873-5891 (2023).

WARNING

THIS PRODUCT IS FOR RESEARCH ONLY - NOT FOR HUMAN OR VETERINARY DIAGNOSTIC OR THERAPEUTIC USE.

SAFETY DATA

This material should be considered hazardous until further information becomes available. Do not ingest, inhale, get in eyes, on skin, or on clothing. Wash thoroughly after handling. Before use, the user must review the [complete](#) Safety Data Sheet, which has been sent via email to your institution.

WARRANTY AND LIMITATION OF REMEDY

Buyer agrees to purchase the material subject to Cayman's Terms and Conditions. Complete Terms and Conditions including Warranty and Limitation of Liability information can be found on our website.

Copyright Cayman Chemical Company, 10/06/2023

CAYMAN CHEMICAL

1180 EAST ELLSWORTH RD
ANN ARBOR, MI 48108 · USA

PHONE: [800] 364-9897

[734] 971-3335

FAX: [734] 971-3640

CUSTSERV@CAYMANCHEM.COM
WWW.CAYMANCHEM.COM