

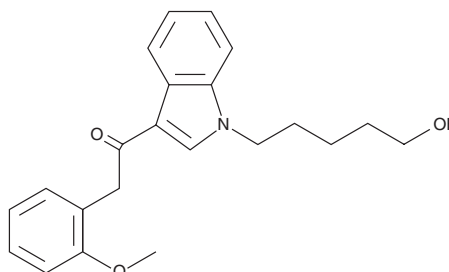
# PRODUCT INFORMATION



## JWH 250 N-(5-hydroxypentyl) metabolite

Item No. 9000767

**CAS Registry No.:** 1427325-83-4  
**Formal Name:** 1-(1-(5-hydroxypentyl)-1H-indol-3-yl)-2-(2-methoxyphenyl)-ethanone  
**MF:** C<sub>22</sub>H<sub>25</sub>NO<sub>3</sub>  
**FW:** 351.4  
**Purity:** ≥98%  
**UV/Vis.:** λ<sub>max</sub>: 213, 245, 304 nm  
**Supplied as:** A crystalline solid  
**Storage:** -20°C  
**Stability:** ≥5 years



Information represents the product specifications. Batch specific analytical results are provided on each certificate of analysis.

### Description

Cannabimimetic indoles, including certain “JWH” compounds, have been identified in herbal blends.<sup>1</sup> Hydroxylated and glucuronidated metabolites of two closely-related compounds, JWH 015 and JWH 018, have been identified from *in vitro* liver microsomal metabolism and from urine, respectively.<sup>2-4</sup> JWH 250 is a cannabimimetic indole that is structurally- and functionally-related to JWH 015 and JWH 018. JWH 250 N-(5-hydroxypentyl) metabolite is expected to be a metabolite of JWH 250 that would be detectable both in serum and in urine. This product is intended for research and forensic applications.

### References

1. Uchiyama, N., Kikura-Hanajiri, R., Kawahara, N., *et al.* Identification of a cannabimimetic indole as a designer drug in a herbal product. *Forensic Toxicol.* **27**(2), 61-66 (2009).
2. Zhang, Q., Ma, P., Cole, R.B., *et al.* Identification of *in vitro* metabolites of JWH-015, an aminoalkylindole agonist for the peripheral cannabinoid receptor (CB<sub>2</sub>) by HPLC-MS/MS. *Anal. Bioanal. Chem.* **386**(5), 1345-1355 (2006).
3. Sobolevsky, T., Prasolov, I., and Rodchenkov, G. Detection of JWH-018 metabolites in smoking mixture post-administration urine. *Forensic Sci. Int.* **200**(1-3), 141-147 (2010).
4. Moran, C.L., Le, V.H., Chimalakonda, K.C., *et al.* Quantitative measurement of JWH-018 and JWH-073 metabolites excreted in human urine. *Anal. Chem.* **83**(11), 4228-4236 (2011).

#### WARNING

THIS PRODUCT IS FOR RESEARCH ONLY - NOT FOR HUMAN OR VETERINARY DIAGNOSTIC OR THERAPEUTIC USE.

#### SAFETY DATA

This material should be considered hazardous until further information becomes available. Do not ingest, inhale, get in eyes, on skin, or on clothing. Wash thoroughly after handling. Before use, the user must review the [complete](#) Safety Data Sheet, which has been sent via email to your institution.

#### WARRANTY AND LIMITATION OF REMEDY

Buyer agrees to purchase the material subject to Cayman's Terms and Conditions. Complete Terms and Conditions including Warranty and Limitation of Liability information can be found on our website.

Copyright Cayman Chemical Company, 07/06/2023

#### CAYMAN CHEMICAL

1180 EAST ELLSWORTH RD  
ANN ARBOR, MI 48108 · USA

**PHONE:** [800] 364-9897  
[734] 971-3335

**FAX:** [734] 971-3640

CUSTSERV@CAYMANCHEM.COM  
[WWW.CAYMANCHEM.COM](http://WWW.CAYMANCHEM.COM)