

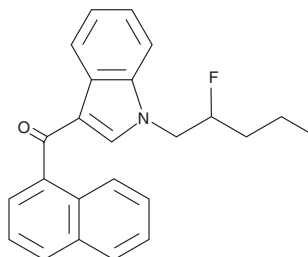
PRODUCT INFORMATION



AM2201 N-(2-fluoropentyl) isomer

Item No. 9001031

CAS Registry No.: 1800102-24-2
Formal Name: (1-(2-fluoropentyl)-1H-indol-3-yl)
(naphthalen-1-yl)methanone
MF: C₂₄H₂₂FNO
FW: 359.4
Purity: ≥95%
UV/Vis.: λ_{max}: 218, 243, 308 nm
Supplied as: A solution in methanol
Storage: -20°C
Stability: ≥4 years



Information represents the product specifications. Batch specific analytical results are provided on each certificate of analysis.

Description

AM2201 is a potent synthetic cannabinoid (CB) with K_i values of 1.0 and 2.6 nM for the central CB₁ and peripheral CB₂ receptors, respectively.¹ AM2201 N-(2-fluoropentyl) isomer differs structurally from AM2201 by having fluorine at the 2 position rather than the 5 position of the pentyl chain. The physiological and toxicological properties of this compound have not been reported. This product is intended for forensic applications.

Reference

1. Makriyannis, A. and Deng, H. Cannabimimetic indole derivatives. *University of Connecticut WO01/28557A1* (2001).

WARNING

THIS PRODUCT IS FOR RESEARCH ONLY - NOT FOR HUMAN OR VETERINARY DIAGNOSTIC OR THERAPEUTIC USE.

SAFETY DATA

This material should be considered hazardous until further information becomes available. Do not ingest, inhale, get in eyes, on skin, or on clothing. Wash thoroughly after handling. Before use, the user must review the [complete](#) Safety Data Sheet, which has been sent via email to your institution.

WARRANTY AND LIMITATION OF REMEDY

Buyer agrees to purchase the material subject to Cayman's Terms and Conditions. Complete Terms and Conditions including Warranty and Limitation of Liability information can be found on our website.

Copyright Cayman Chemical Company, 06/19/2023

CAYMAN CHEMICAL

1180 EAST ELLSWORTH RD
ANN ARBOR, MI 48108 · USA

PHONE: [800] 364-9897
[734] 971-3335

FAX: [734] 971-3640

CUSTSERV@CAYMANCHEM.COM
WWW.CAYMANCHEM.COM