

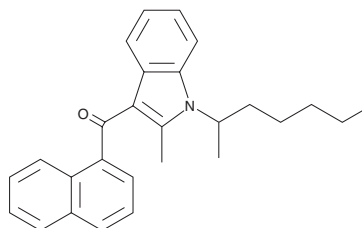
PRODUCT INFORMATION



JWH 011

Item No. 9001058

CAS Registry No.: 155471-13-9
Formal Name: [2-methyl-1-(1-methylhexyl)-1H-indol-3-yl]-1-naphthalenyl-methanone
MF: C₂₇H₂₉NO
FW: 383.5
Purity: ≥98%
UV/Vis.: λ_{max}: 218, 323 nm
Supplied as: A solution in methanol
Storage: -20°C
Stability: ≥4 years



Information represents the product specifications. Batch specific analytical results are provided on each certificate of analysis.

Description

JWH 011 is a synthetic cannabinoid (CB). This N-(1-methylhexyl) compound is analogous to the N-hexyl JWH 004, also a 2-methyl indole, which has high affinities for both central CB₁ and peripheral CB₂ receptors (K_i = 48 and 4.02 nM, respectively).¹ This product is intended for forensic and research applications.

Reference

1. Aung, M.M., Griffin, G., Huffman, J.W., *et al.* Influence of the N-1 alkyl chain length of cannabimimetic indoles upon CB₁ and CB₂ receptor binding. *Drug Alcohol Depend.* **60(2)**, 133-140 (2000).

WARNING

THIS PRODUCT IS FOR RESEARCH ONLY - NOT FOR HUMAN OR VETERINARY DIAGNOSTIC OR THERAPEUTIC USE.

SAFETY DATA

This material should be considered hazardous until further information becomes available. Do not ingest, inhale, get in eyes, on skin, or on clothing. Wash thoroughly after handling. Before use, the user must review the [complete](#) Safety Data Sheet, which has been sent via email to your institution.

WARRANTY AND LIMITATION OF REMEDY

Buyer agrees to purchase the material subject to Cayman's Terms and Conditions. Complete Terms and Conditions including Warranty and Limitation of Liability information can be found on our website.

Copyright Cayman Chemical Company, 06/21/2023

CAYMAN CHEMICAL

1180 EAST ELLSWORTH RD
ANN ARBOR, MI 48108 · USA

PHONE: [800] 364-9897
[734] 971-3335

FAX: [734] 971-3640

CUSTSERV@CAYMANCHEM.COM
WWW.CAYMANCHEM.COM