

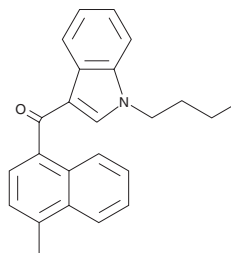
# PRODUCT INFORMATION



## JWH 073 4-methylnaphthyl analog

Item No. 9001076

**CAS Registry No.:** 1354631-21-2  
**Formal Name:** (1-butyl-1H-indol-3-yl)(4-methylnaphthalen-1-yl)methanone  
**MF:** C<sub>24</sub>H<sub>23</sub>NO  
**FW:** 341.5  
**Purity:** ≥98%  
**UV/Vis.:** λ<sub>max</sub>: 222, 316 nm  
**Supplied as:** A crystalline solid  
**Storage:** -20°C  
**Stability:** ≥5 years



Information represents the product specifications. Batch specific analytical results are provided on each certificate of analysis.

### Description

JWH 073 is a cannabimimetic aminoalkylindole which has been identified in herbal incense.<sup>1</sup> JWH 073 4-methylnaphthyl analog differs structurally from JWH 073 by having a methyl group added at the 4 position of the naphthyl rings. While the effect of this modification to JWH 073 has not been evaluated, the similar addition to JWH 018 produces JWH 122, which has higher affinities for both central cannabinoid (CB<sub>1</sub>) (K<sub>i</sub> = 9.0 and 0.69, respectively) and peripheral cannabinoid (CB<sub>2</sub>) receptors (K<sub>i</sub> = 2.9 and 1.2, respectively).<sup>2</sup> This product is intended for forensic and research purposes only.

### References

1. Kikura-Hanajiri, R., Uchiyama, N., and Goda, Y. Survey of current trends in the abuse of psychotropic substances and plants in Japan. *Leg. Med. (Tokyo)* **13**(3), 109-15 (2011).
2. Huffman, J.W., Zengin, G., Wu, M.-J., et al. Structure-activity relationships for 1-alkyl-3-(1-naphthoyl) indoles at the cannabinoid CB<sub>1</sub> and CB<sub>2</sub> receptors: steric and electronic effects of naphthoyl substituents. New highly selective CB<sub>2</sub> receptor agonists. *Bioorg. Med. Chem.* **13**(1), 89-112 (2005).

#### WARNING

THIS PRODUCT IS FOR RESEARCH ONLY - NOT FOR HUMAN OR VETERINARY DIAGNOSTIC OR THERAPEUTIC USE.

#### SAFETY DATA

This material should be considered hazardous until further information becomes available. Do not ingest, inhale, get in eyes, on skin, or on clothing. Wash thoroughly after handling. Before use, the user must review the [complete](#) Safety Data Sheet, which has been sent via email to your institution.

#### WARRANTY AND LIMITATION OF REMEDY

Buyer agrees to purchase the material subject to Cayman's Terms and Conditions. Complete Terms and Conditions including Warranty and Limitation of Liability information can be found on our website.

Copyright Cayman Chemical Company, 06/22/2023

#### CAYMAN CHEMICAL

1180 EAST ELLSWORTH RD  
ANN ARBOR, MI 48108 · USA

**PHONE:** [800] 364-9897  
[734] 971-3335

**FAX:** [734] 971-3640

CUSTSERV@CAYMANCHEM.COM  
[WWW.CAYMANCHEM.COM](http://WWW.CAYMANCHEM.COM)