

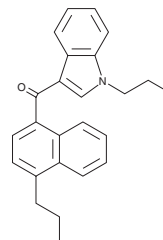
# PRODUCT INFORMATION



## JWH 180

Item No. 9001205

**CAS Registry No.:** 824959-87-7  
**Formal Name:** (1-propyl-1H-indol-3-yl)(4-propyl-1-naphthalenyl)-methanone  
**MF:** C<sub>25</sub>H<sub>25</sub>NO  
**FW:** 355.5  
**Purity:** ≥98%  
**UV/Vis.:** λ<sub>max</sub>: 223, 316 nm  
**Supplied as:** A crystalline solid  
**Storage:** -20°C  
**Stability:** ≥5 years



Information represents the product specifications. Batch specific analytical results are provided on each certificate of analysis.

### Description

JWH 180 is a potent synthetic cannabinoid (CB) that binds both the central CB<sub>1</sub> receptor (K<sub>i</sub> = 26 nM) and the peripheral CB<sub>2</sub> receptor (K<sub>i</sub> = 9.6 nM).<sup>1</sup> The physiological and toxicological properties of JWH 180 have not been characterized. Compounds like JWH 180 have been detected in herbal blends sold as recreational drugs.<sup>2-4</sup> This product is intended for research and forensic applications.

### References

1. Huffman, J.W., Zengin, G., Wu, M.-J., *et al.* Structure-activity relationships for 1-alkyl-3-(1-naphthoyl) indoles at the cannabinoid CB<sub>1</sub> and CB<sub>2</sub> receptors: steric and electronic effects of naphthoyl substituents. New highly selective CB<sub>2</sub> receptor agonists. *Bioorg. Med. Chem.* **13(1)**, 89-112 (2005).
2. Kikura-Hanajiri, R., Uchiyama, N., and Goda, Y. Survey of current trends in the abuse of psychotropic substances and plants in Japan. *Leg. Med. (Tokyo)* **13(3)**, 109-15 (2011).
3. Ernst, L., Schiebel, H.M., Theuring, C., *et al.* Identification and characterization of JWH-122 used as new ingredient in "spice-like" herbal incenses. *Forensic Sci. Int.* **208(1-3)**, e31-5 (2011).
4. Uchiyama, N., Kikura-Hanajiri, R., Ogata, J., *et al.* Chemical analysis of synthetic cannabinoids as designer drugs in herbal products. *Forensic Sci. Int.* **198(1-3)**, 31-38 (2010).

#### WARNING

THIS PRODUCT IS FOR RESEARCH ONLY - NOT FOR HUMAN OR VETERINARY DIAGNOSTIC OR THERAPEUTIC USE.

#### SAFETY DATA

This material should be considered hazardous until further information becomes available. Do not ingest, inhale, get in eyes, on skin, or on clothing. Wash thoroughly after handling. Before use, the user must review the [complete](#) Safety Data Sheet, which has been sent via email to your institution.

#### WARRANTY AND LIMITATION OF REMEDY

Buyer agrees to purchase the material subject to Cayman's Terms and Conditions. Complete Terms and Conditions including Warranty and Limitation of Liability information can be found on our website.

Copyright Cayman Chemical Company, 07/07/2023

#### CAYMAN CHEMICAL

1180 EAST ELLSWORTH RD  
ANN ARBOR, MI 48108 · USA

**PHONE:** [800] 364-9897  
[734] 971-3335

**FAX:** [734] 971-3640

CUSTSERV@CAYMANCHEM.COM  
WWW.CAYMANCHEM.COM