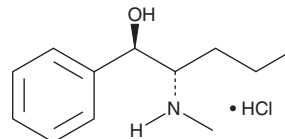


PRODUCT INFORMATION



Pentedrone metabolite (hydrochloride) ((±)-Ephedrine stereochemistry) Item No. 9001428

CAS Registry No.: 1422513-91-4
Formal Name: α-[(1R)-1-(methylamino)butyl]-
benzenemethanol, monohydrochloride
Synonyms: α-methylamino-Valerophenone metabolite,
1R-Dihydropentedrone
MF: C₁₂H₁₉NO • HCl
FW: 229.8
Purity: ≥95%
Supplied as: A crystalline solid
Storage: -20°C
Stability: ≥5 years



Information represents the product specifications. Batch specific analytical results are provided on each certificate of analysis.

Description

Pentedrone metabolite (hydrochloride) ((±)-ephedrine stereochemistry) (Item No. 9001428) is an analytical reference standard categorized as a potential cathinone metabolite.¹ Pentedrone metabolite (hydrochloride) ((±)-ephedrine stereochemistry) is a potential metabolite of pentedrone (Item Nos. 21322 | 11011). This product is intended for research and forensic applications.

Reference

1. Silva, B., Rodrigues, J.S., Almeida, A.S., *et al.* Enantioselectivity of pentedrone and methylone on metabolic profiling in 2D and 3D human hepatocyte-like cells. *Pharmaceuticals (Basel)* **15(3)**, 368 (2022).

WARNING
THIS PRODUCT IS FOR RESEARCH ONLY - NOT FOR HUMAN OR VETERINARY DIAGNOSTIC OR THERAPEUTIC USE.

SAFETY DATA
This material should be considered hazardous until further information becomes available. Do not ingest, inhale, get in eyes, on skin, or on clothing. Wash thoroughly after handling. Before use, the user must review the [complete](#) Safety Data Sheet, which has been sent via email to your institution.

WARRANTY AND LIMITATION OF REMEDY
Buyer agrees to purchase the material subject to Cayman's Terms and Conditions. Complete Terms and Conditions including Warranty and Limitation of Liability information can be found on our website.

Copyright Cayman Chemical Company, 09/08/2023

CAYMAN CHEMICAL

1180 EAST ELLSWORTH RD
ANN ARBOR, MI 48108 · USA

PHONE: [800] 364-9897
[734] 971-3335

FAX: [734] 971-3640

CUSTSERV@CAYMANCHEM.COM
WWW.CAYMANCHEM.COM