

PRODUCT INFORMATION



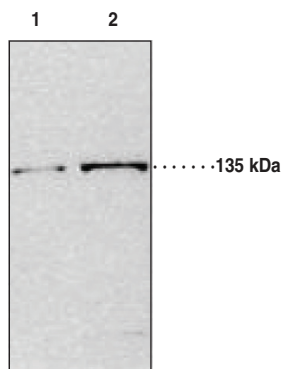
JMJD2A Polyclonal Antibody

Item No. 10382

Overview and Properties

Contents:	This vial contains 500 µl of protein A purified antibody.
Synonyms:	Jumonji Domain Containing 2A, KDM4A, Lysine-Specific Demethylase 4A
Immunogen:	Human recombinant JMJD2A amino acids 1-350
Cross Reactivity:	(+) JMJD2C, JMJD2B
Species Reactivity:	(+) Human; other species not tested
Uniprot No.:	O75164
Form:	Liquid
Storage:	-20°C (as supplied)
Stability:	≥1 year
Storage Buffer:	TBS, pH 7.4, with 50% glycerol, 0.1% BSA, and 0.02% sodium azide
Host:	Rabbit
Application:	Western blot (WB); the recommended starting dilution is 1:200. Other applications were not tested, therefore optimal working concentration/dilution should be determined empirically.

Image



Lane 1: DLD1 cell lysate (30 µg)
Lane 2: DLD1 cell lysate (60 µg)

WARNING
THIS PRODUCT IS FOR RESEARCH ONLY - NOT FOR HUMAN OR VETERINARY DIAGNOSTIC OR THERAPEUTIC USE.

SAFETY DATA
This material should be considered hazardous until further information becomes available. Do not ingest, inhale, get in eyes, on skin, or on clothing. Wash thoroughly after handling. Before use, the user must review the complete Safety Data Sheet, which has been sent via email to your institution.

WARRANTY AND LIMITATION OF REMEDY
Buyer agrees to purchase the material subject to Cayman's Terms and Conditions. Complete Terms and Conditions including Warranty and Limitation of Liability information can be found on our website.

Copyright Cayman Chemical Company, 03/25/2019

CAYMAN CHEMICAL
1180 EAST ELLSWORTH RD
ANN ARBOR, MI 48108 · USA
PHONE: [800] 364-9897
[734] 971-3335
FAX: [734] 971-3640
CUSTSERV@CAYMANCHEM.COM
WWW.CAYMANCHEM.COM

PRODUCT INFORMATION



Description

Jumonji Domain Containing 2A (JMJD2A) is a lysine specific demethylase with emerging roles in histone modification or epigenetic remodeling.¹⁻³ This JMJD2A polyclonal antibody was raised against an N-terminal recombinant fragment of JMJD2A. This fragment includes amino acids 1-350 including the JMJD and JMJC domains but not the two LAP/PHD zinc finger or Tudor domains of the 1,064 amino acid protein.^{4,5} JMJD2A is detected at 135 kDa by western blotting using a DLD1 cell lysate as a positive control. Also, the expression of JMJD2A varies by tissue, and northern blotting suggests skeletal muscle as a negative control and lung as a positive control tissue.⁵

References

1. Anand, R. and Marmorstein, R. Structure and mechanism of lysine-specific demethylase enzymes. *J. Biol. Chem.* **282**(49), 35425-35429 (2007).
2. Marmorstein, R. and Trievel, R.C. Histone modifying enzymes: Structures, mechanisms, and specificities. *Biochim. Biophys. Acta.* **1789**, 58-68 (2009).
3. Kim, J., Daniel, J., Espejo, A., *et al.* Tudor, MBT and chromo domains gauge the degree of lysine methylation. *EMBO reports* **7**(4), 397-403 (2006).
4. Metzger, E. and Schüle, R. The expanding world of histone lysine demethylases. *Nature Structural and Molecular Biology* **14**(4), 252-254 (2007).
5. Gray, S.G., Iglesias, A.H., Lizcano, F., *et al.* Functional characterization of JMJD2A, a histone deacetylase- and retinoblastoma-binding protein. *J. Biol. Chem.* **280**(31), 28507-28518 (2005).

CAYMAN CHEMICAL
1180 EAST ELLSWORTH RD
ANN ARBOR, MI 48108 · USA
PHONE: [800] 364-9897
[734] 971-3335
FAX: [734] 971-3640
CUSTSERV@CAYMANCHEM.COM
WWW.CAYMANCHEM.COM