

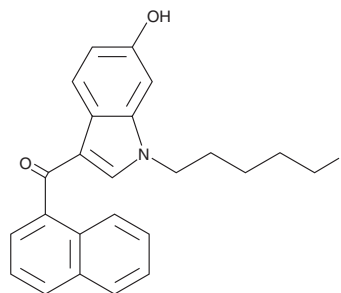
PRODUCT INFORMATION



AM2201 6-hydroxyindole metabolite

Item No. 11192

CAS Registry No.: 1427521-35-4
Formal Name: (1-(5-fluoropentyl)-6-hydroxy-1H-indol-3-yl)(naphthalen-1-yl) methanone
MF: C₂₄H₂₂FNO₂
FW: 375.4
Purity: ≥98%
Stability: ≥2 years at -20°C
Supplied as: A crystalline solid
UV/Vis.: λ_{max}: 219, 294 nm



Laboratory Procedures

For long term storage, we suggest that AM2201 6-hydroxyindole metabolite be stored as supplied at -20°C. It should be stable for at least two years.

AM2201 6-hydroxyindole metabolite is supplied as crystalline solid. A stock solution may be made by dissolving the AM2201 6-hydroxyindole metabolite in the solvent of choice. AM2201 6-hydroxyindole metabolite is soluble in organic solvents such as ethanol, DMSO, and dimethyl formamide, which should be purged with an inert gas. The solubility of AM2201 6-hydroxyindole metabolite in these solvents is approximately 20 mg/ml.

AM2201 6-hydroxyindole metabolite is sparingly soluble in aqueous buffers. For maximum solubility in aqueous buffers, AM2201 6-hydroxyindole metabolite should first be dissolved in ethanol and then diluted with the aqueous buffer of choice. AM2201 6-hydroxyindole metabolite has a solubility of approximately 0.25 mg/ml in a 1:3 solution of ethanol:PBS (pH 7.2) using this method. We do not recommend storing the aqueous solution for more than one day.

Description

AM2201 is a potent synthetic cannabinoid (CB) with K_i values of 1.0 and 2.6 nM for the central CB₁ and peripheral CB₂ receptors, respectively.¹ AM2201 6-hydroxyindole metabolite is an expected metabolite of AM2201 generated during phase I metabolism by cytochrome P450, suggesting that it would be detectable in blood and urine.² The biological properties of this compound are not known. This product is intended for forensic applications.

References

1. Makriyannis, A. and Deng, H. Cannabimimetic indole derivatives. WO 01/28557 A1 (2001), 1-25, PCT/US00/28832.
2. Wintermeyer, A., Möller, I., Thevis, M., *et al.* *In vitro* phase I metabolism of the synthetic cannabimimetic JWH-018. *Anal. Bioanal. Chem.* **398**, 2141-53 (2010).

WARNING

THIS PRODUCT IS FOR RESEARCH ONLY - NOT FOR HUMAN OR VETERINARY DIAGNOSTIC OR THERAPEUTIC USE.

SAFETY DATA

This material should be considered hazardous until further information becomes available. Do not ingest, inhale, get in eyes, on skin, or on clothing. Wash thoroughly after handling. Before use, the user must review the complete Safety Data Sheet, which has been sent via email to your institution.

WARRANTY AND LIMITATION OF REMEDY

Buyer agrees to purchase the material subject to Cayman's Terms and Conditions. Complete Terms and Conditions including Warranty and Limitation of Liability information can be found on our website.

Copyright Cayman Chemical Company, 08/19/2015

CAYMAN CHEMICAL

1180 EAST ELLSWORTH RD
ANN ARBOR, MI 48108 · USA

PHONE: [800] 364-9897
[734] 971-3335

FAX: [734] 971-3640

CUSTSERV@CAYMANCHEM.COM
WWW.CAYMANCHEM.COM