

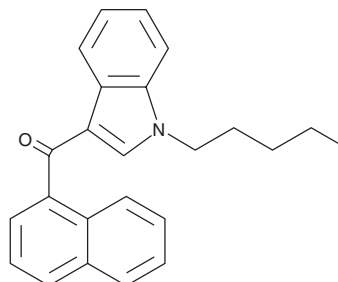
PRODUCT INFORMATION



JWH 018 (exempt preparation)

Item No. 13169

CAS Registry No.: 209414-07-3
Formal Name: 1-naphthalenyl(1-pentyl-1H-indol-3-yl)-methanone
Synonym: AM678
MF: C₂₄H₂₃NO
FW: 341.5
Purity: ≥98%
UV/Vis.: λ_{max}: 219, 246, 315 nm
Supplied as: A solution in methanol
Storage: -20°C
Stability: ≥1 year



Information represents the product specifications. Batch specific analytical results are provided on each certificate of analysis.

Description

JWH 018 (exempt preparation) (Item No. 13169) is an analytical reference standard categorized as a synthetic cannabinoid.¹ JWH 018 has been found in Spice/K2-type herbal blends and may have neurotoxic properties. JWH 018 is regulated as a Schedule I compound in the United States. JWH 018 (exempt preparation) (Item No. 13169) is provided as a DEA exempt preparation. This product is intended for research and forensic applications.

Reference

1. Brents, L.K., Reichard, E.E., Zimmerman, S.M., *et al.* Phase I hydroxylated metabolites of the K2 synthetic cannabinoid JWH-018 retain *in vitro* and *in vivo* cannabinoid 1 receptor affinity and activity. *PLoS One* 6(7), e21917 (2015).

WARNING

THIS PRODUCT IS FOR RESEARCH ONLY - NOT FOR HUMAN OR VETERINARY DIAGNOSTIC OR THERAPEUTIC USE.

SAFETY DATA

This material should be considered hazardous until further information becomes available. Do not ingest, inhale, get in eyes, on skin, or on clothing. Wash thoroughly after handling. Before use, the user must review the [complete](#) Safety Data Sheet, which has been sent via email to your institution.

WARRANTY AND LIMITATION OF REMEDY

Buyer agrees to purchase the material subject to Cayman's Terms and Conditions. Complete Terms and Conditions including Warranty and Limitation of Liability information can be found on our website.

Copyright Cayman Chemical Company, 07/31/2020

CAYMAN CHEMICAL

1180 EAST ELLSWORTH RD
ANN ARBOR, MI 48108 · USA

PHONE: [800] 364-9897
[734] 971-3335

FAX: [734] 971-3640

CUSTSERV@CAYMANCHEM.COM
WWW.CAYMANCHEM.COM