

# PRODUCT INFORMATION



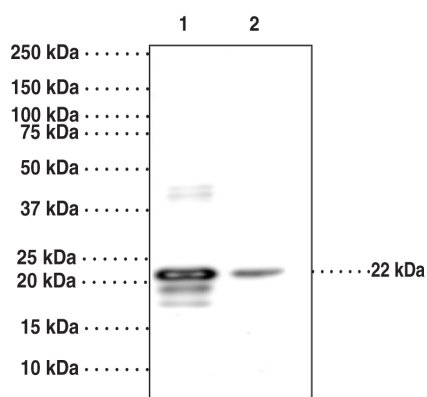
## Asprosin Polyclonal Antibody

Item No. 23857

### Overview and Properties

<b>Contents:</b>	This vial contains 300 µg of protein A-purified antibody.
<b>Synonyms:</b>	Cleaved FBN1, Cleaved Fibrillin-1
<b>Immunogen:</b>	Human recombinant protein
<b>Species Reactivity:</b>	(+) Human asprosin
<b>Uniprot No.:</b>	P35555
<b>Form:</b>	Liquid
<b>Storage:</b>	-20°C (as supplied)
<b>Stability:</b>	≥2 years
<b>Storage Buffer:</b>	PBS, pH 7.2, with 50% glycerol and 0.02% sodium azide
<b>Host:</b>	Rabbit
<b>Applications:</b>	Immunoprecipitation (IP) and Western blot (WB). Other applications were not tested, therefore optimal working concentration/dilution should be determined empirically.

### Image



Lane 1: Asprosin Recombinant Protein (0.01 µg)  
Lane 2: Asprosin Recombinant Protein (0.001 µg)

### Description

**WARNING**  
THIS PRODUCT IS FOR RESEARCH ONLY - NOT FOR HUMAN OR VETERINARY DIAGNOSTIC OR THERAPEUTIC USE.

**SAFETY DATA**  
This material should be considered hazardous until further information becomes available. Do not ingest, inhale, get in eyes, on skin, or on clothing. Wash thoroughly after handling. Before use, the user must review the complete Safety Data Sheet, which has been sent via email to your institution.

**WARRANTY AND LIMITATION OF REMEDY**  
Buyer agrees to purchase the material subject to Cayman's Terms and Conditions. Complete Terms and Conditions including Warranty and Limitation of Liability information can be found on our website.

Copyright Cayman Chemical Company, 04/17/2018

**CAYMAN CHEMICAL**  
1180 EAST ELLSWORTH RD  
ANN ARBOR, MI 48108 · USA  
PHONE: [800] 364-9897  
[734] 971-3335  
FAX: [734] 971-3640  
CUSTSERV@CAYMANCHEM.COM  
WWW.CAYMANCHEM.COM

# PRODUCT INFORMATION



Asprosin is a glucogenic protein hormone secreted by white adipose tissue in mammals.<sup>1</sup> This ~16 kDa protein is a 140 amino acid C-terminal cleavage product produced by furin cleavage of profibrillin. Asprosin increases glucose release *via* cyclic AMP (cAMP) and protein kinase A (PKA) in hepatocytes *via* interaction with a cell surface receptor, an effect that can be reversed by suramin, an inhibitor of heterotrimeric G proteins, or Rp-cAMPS (Item No. 16985), an antagonist of cAMP binding to PKA. *In vivo*, elevated plasma asprosin increases hepatic glucose production but does not affect glucose uptake in peripheral organs in response to insulin. Asprosin is orexigenic, activating AgRP<sup>+</sup> neurons in a cAMP-dependent manner which leads to appetite stimulation and increased body weight.<sup>2</sup> Plasma asprosin is elevated in adult humans and mice with type 2 diabetes mellitus and other genetic conditions that confer insulin resistance.<sup>1,3</sup> Cayman's Asprosin Polyclonal Antibody can be used for Western blot and immunoprecipitation.

## References

---

1. Romere, C., Duerrschmid, C., Bournat, J., *et al.* Asprosin, a fasting-induced glucogenic protein hormone. *Cell* **165**(3), 566-579 (2016).
2. Duerrschmid, C., He, Y., Wang, C., *et al.* Asprosin is a centrally acting orexigenic hormone. *Nat. Med.* **23**(12), 1444-1453 (2017).
3. Zhang, L., Chen, C., Zhou, N., *et al.* Circulating asprosin concentrations are increased in type 2 diabetes mellitus and independently associated with fasting glucose and triglyceride. *Clin. Chim. Acta.* **S0009-898(17)**, 30430-30438 (2017).

CAYMAN CHEMICAL  
1180 EAST ELLSWORTH RD  
ANN ARBOR, MI 48108 · USA  
PHONE: [800] 364-9897  
[734] 971-3335  
FAX: [734] 971-3640  
CUSTSERV@CAYMANCHEM.COM  
WWW.CAYMANCHEM.COM