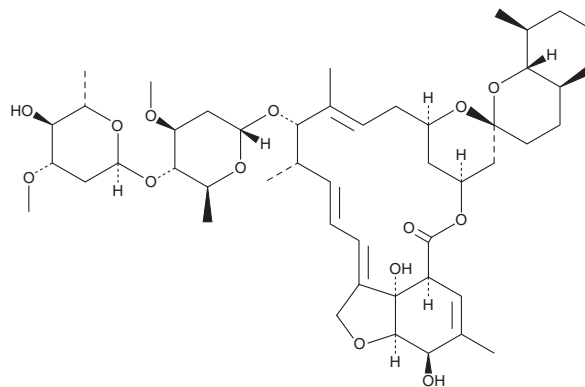


PRODUCT INFORMATION



epi-Ivermectin B_{1a} Item No. 25211

Formal Name: 5-O-demethyl-22,23-dihydro-ivermectin A_{1a}
Synonyms: 2-dehydro-4-dihydro Avermectin B_{1a},
epi-dihydro Avermectin B_{1a},
22,23-dihydro Avermectin B_{1a}
MF: C₄₈H₇₄O₁₄
FW: 875.1
Purity: ≥95%
Supplied as: A solid
Storage: -20°C
Stability: ≥2 years



Information represents the product specifications. Batch specific analytical results are provided on each certificate of analysis.

Laboratory Procedures

epi-Ivermectin B_{1a} is supplied as a solid. A stock solution may be made by dissolving the *epi*-ivermectin B_{1a} in the solvent of choice. *epi*-Ivermectin B_{1a} is soluble in organic solvents such as ethanol, methanol, DMSO, and dimethyl formamide.

Description

epi-Ivermectin B_{1a} is a degradation product formed by the reversible base-catalyzed isomerization of ivermectin B_{1a} (Item No. 18768).¹ It is less active than ivermectin against *T. urticae* (LC₉₀s = 4.0 and 0.038 ppm, respectively).

Reference

1. Pivnichny, J.V., Arison, B.H., Preiser, F.A., *et al.* Base-catalyzed isomerization of avermectins. *J. Agric. Food Chem.* **36**(4), 826-828 (1988).

WARNING
THIS PRODUCT IS FOR RESEARCH ONLY - NOT FOR HUMAN OR VETERINARY DIAGNOSTIC OR THERAPEUTIC USE.

SAFETY DATA
This material should be considered hazardous until further information becomes available. Do not ingest, inhale, get in eyes, on skin, or on clothing. Wash thoroughly after handling. Before use, the user must review the [complete](#) Safety Data Sheet, which has been sent via email to your institution.

WARRANTY AND LIMITATION OF REMEDY
Buyer agrees to purchase the material subject to Cayman's Terms and Conditions. Complete Terms and Conditions including Warranty and Limitation of Liability information can be found on our website.

Copyright Cayman Chemical Company, 06/07/2018

CAYMAN CHEMICAL

1180 EAST ELLSWORTH RD
ANN ARBOR, MI 48108 · USA

PHONE: [800] 364-9897
[734] 971-3335

FAX: [734] 971-3640

CUSTSERV@CAYMANCHEM.COM
WWW.CAYMANCHEM.COM